

World Sport



The research for Cricket Foundation was carried out between :**10 / 09 / 2010** and **14 / 09 / 2010**
Sample: 510 Children Aged 11 - 18

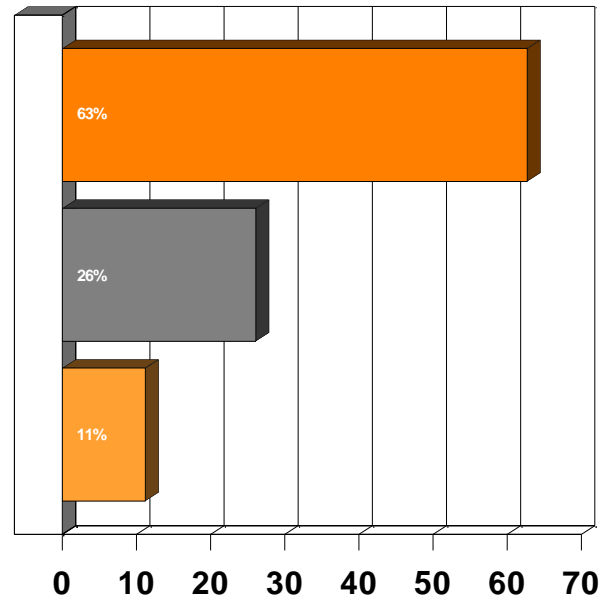
Question One

Do you think that all cricket matches are fixed?

Base % Respondents	
Base	100.0%
Q2	
No	62.7%
Don't know	26.1%
Yes	11.2%

Question One

Do you think that all cricket matches are fixed?



■ No

■ Don't know

■ Yes

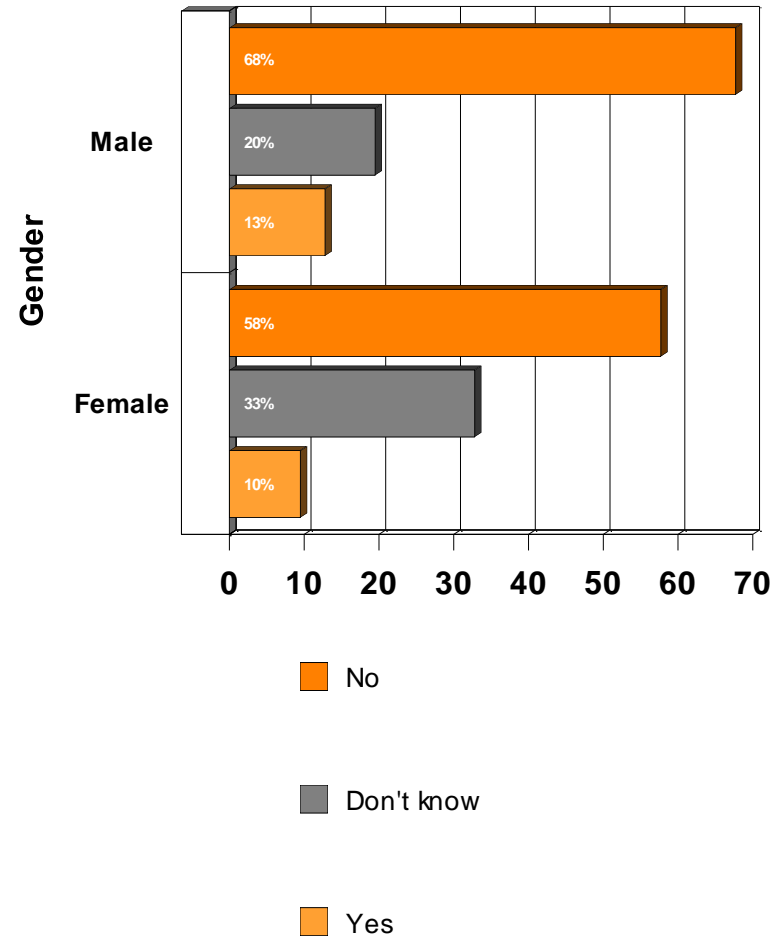
Question One Cross Tabulation With Gender

Do you think that all cricket matches are fixed?

Break % Respondents	Base	Gender	
		Male	Female
Base	510	257	253
Q2			
No	62.7%	67.7%	57.7%
Don't know	26.1%	19.5%	32.8%
Yes	11.2%	12.8%	9.5%

Question One Cross Tabulation With Gender

Do you think that all cricket matches are fixed?



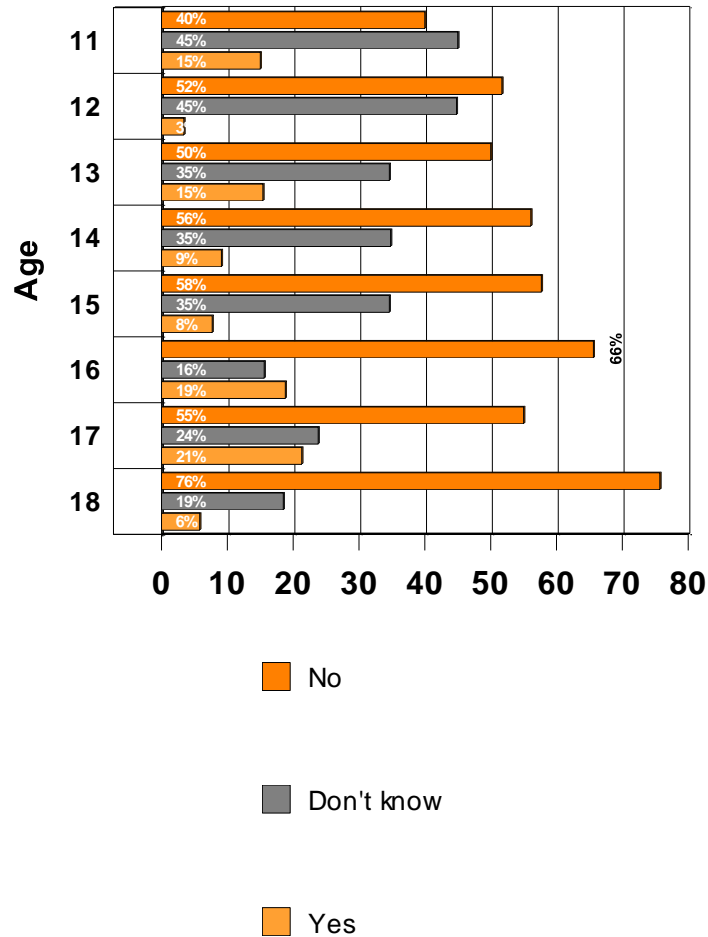
Question One Cross Tabulation With Age

Do you think that all cricket matches are fixed?

Break % Respondents	Base	Age							
		11	12	13	14	15	16	17	18
Base	510	20	29	26	66	52	64	80	173
Q2									
No	62.7%	40.0%	51.7%	50.0%	56.1%	57.7%	65.6%	55.0%	75.7%
Don't know	26.1%	45.0%	44.8%	34.6%	34.8%	34.6%	15.6%	23.8%	18.5%
Yes	11.2%	15.0%	3.4%	15.4%	9.1%	7.7%	18.8%	21.3%	5.8%

Question One Cross Tabulation With Age

Do you think that all cricket matches are fixed?



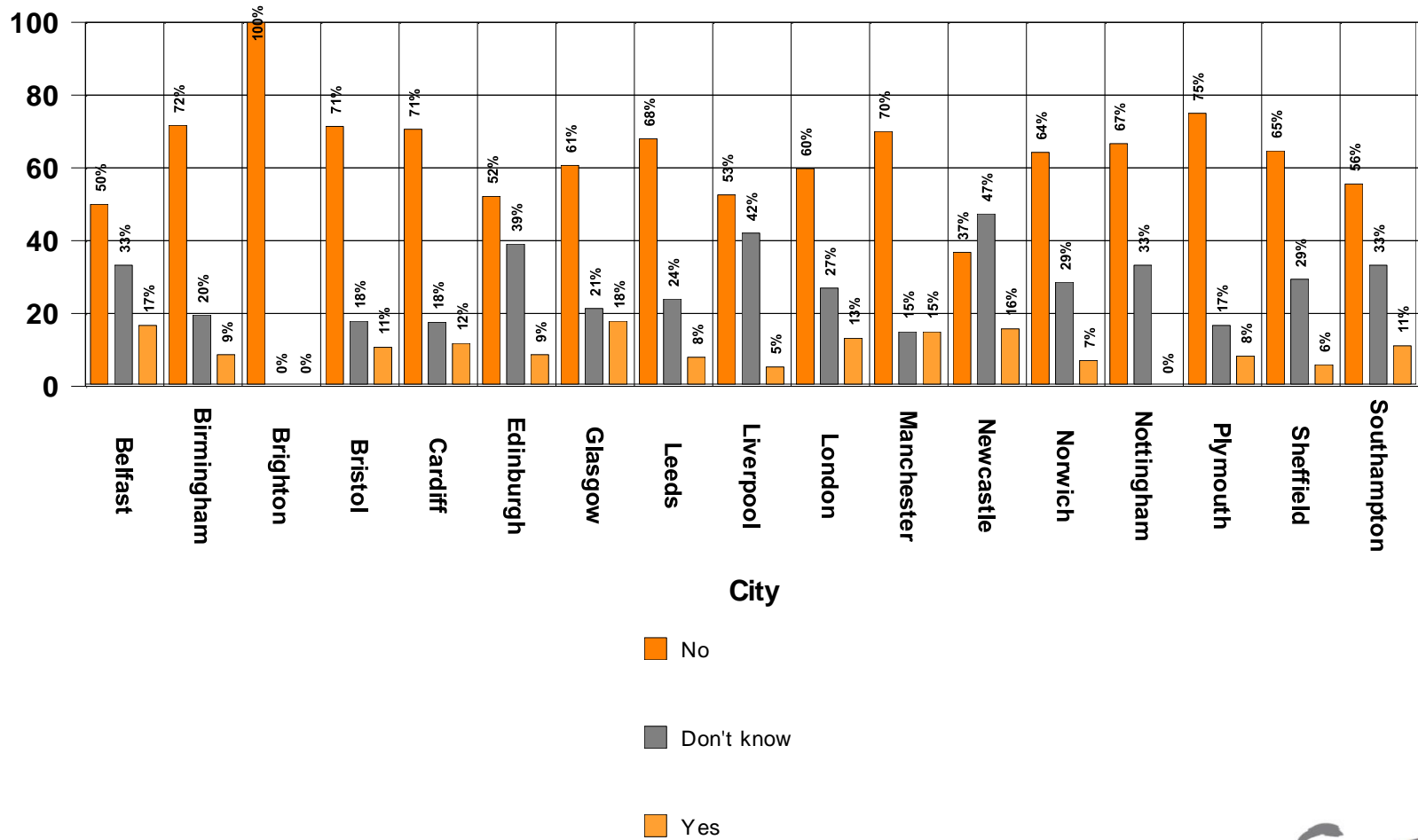
Question One Cross Tabulation With City

Do you think that all cricket matches are fixed?

Break % Responde...	Base	City																
		Belfast	Birmin...	Brighton	Bristol	Cardiff	Edinbu...	Glasgow	Leeds	Liverp...	London	Manch...	New ca...	Norwich	Notting...	Plymo...	Sheffield	Southa...
Base	510	12	46	6	28	17	23	28	25	19	174	40	19	14	21	12	17	9
Q2																		
No	62.7%	50.0%	71.7%	100.0%	71.4%	70.6%	52.2%	60.7%	68.0%	52.6%	59.8%	70.0%	36.8%	64.3%	66.7%	75.0%	64.7%	55.6%
Don't know	26.1%	33.3%	19.6%	-	17.9%	17.6%	39.1%	21.4%	24.0%	42.1%	27.0%	15.0%	47.4%	28.6%	33.3%	16.7%	29.4%	33.3%
Yes	11.2%	16.7%	8.7%	-	10.7%	11.8%	8.7%	17.9%	8.0%	5.3%	13.2%	15.0%	15.8%	7.1%	-	8.3%	5.9%	11.1%

Question One Cross Tabulation With City

Do you think that all cricket matches are fixed?



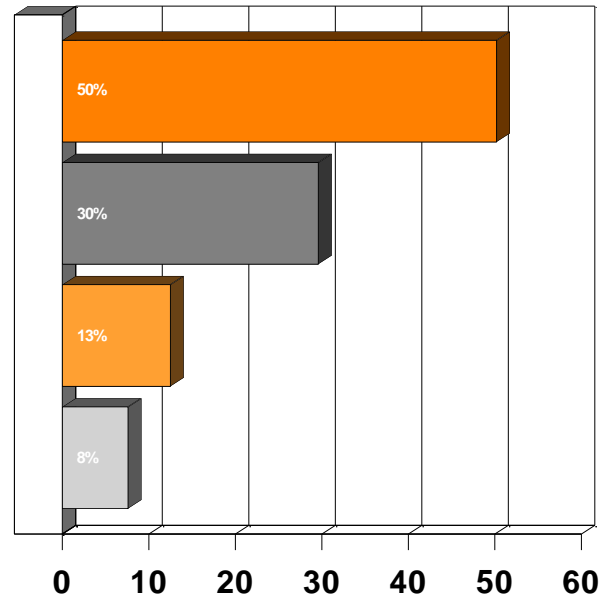
Question Two

Have the media reports on the Pakistan betting scandal put off you or your friends from watching cricket on TV or going to see games live?

Absolute Base % Respondents	
Base	510 100.0%
Q3	
I/we don't watch cricket on TV or see games live	256 50.2%
No	151 29.6%
Yes	64 12.5%
Don't know	39 7.6%

Question Two


Have the media reports on the Pakistan betting scandal put off you or your friends from watching cricket on TV or going to see games live?



 I/we don't watch cricket on TV or see games live

 No

 Yes

 Don't know

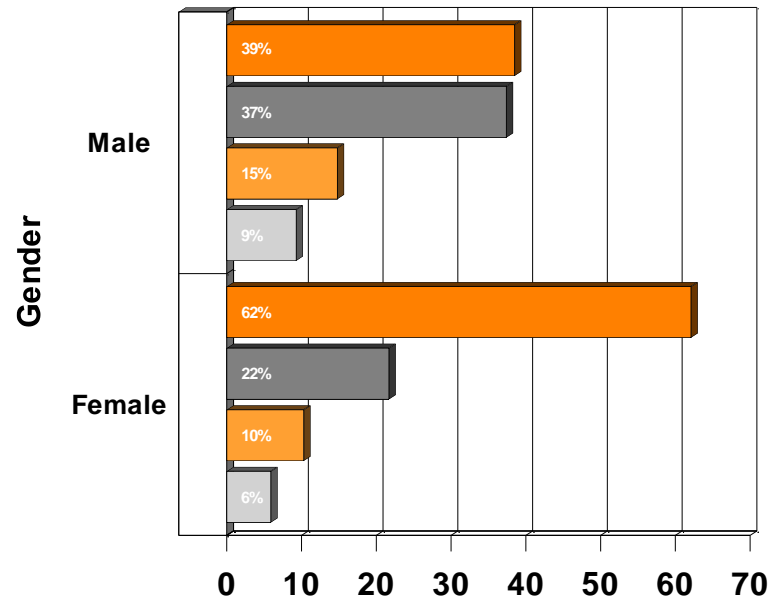
Question Two Cross Tabulation With Gender

Have the media reports on the Pakistan betting scandal put off you or your friends from watching cricket on TV or going to see games live?

Break % Respondents	Base	Gender	
		Male	Female
Base	510	257	253
Q3			
I/we don't watch cricket on TV or see games live	50.2%	38.5%	62.1%
No	29.6%	37.4%	21.7%
Yes	12.5%	14.8%	10.3%
Don't know	7.6%	9.3%	5.9%

Question Two Cross Tabulation With Gender

Have the media reports on the Pakistan betting scandal put off you or your friends from watching cricket on TV or going to see games live?



■ I/we don't watch cricket on TV or see games live

■ No

■ Yes

■ Don't know

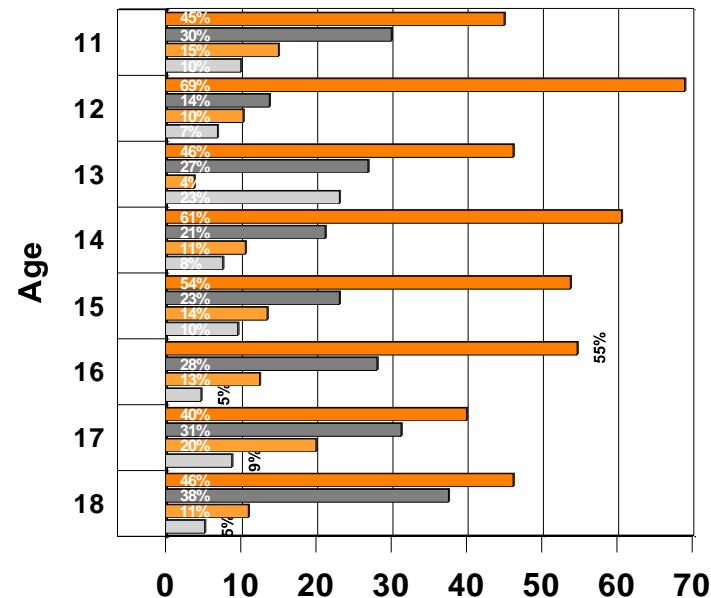
Question Two Cross Tabulation With Age

Have the media reports on the Pakistan betting scandal put off you or your friends from watching cricket on TV or going to see games live?

Break % Respondents	Base	Age							
		11	12	13	14	15	16	17	18
Base	510	20	29	26	66	52	64	80	173
Q3									
I/we don't watch cricket on TV or see games live	50.2%	45.0%	69.0%	46.2%	60.6%	53.8%	54.7%	40.0%	46.2%
No	29.6%	30.0%	13.8%	26.9%	21.2%	23.1%	28.1%	31.3%	37.6%
Yes	12.5%	15.0%	10.3%	3.8%	10.6%	13.5%	12.5%	20.0%	11.0%
Don't know	7.6%	10.0%	6.9%	23.1%	7.6%	9.6%	4.7%	8.8%	5.2%

Question Two Cross Tabulation With Age

Have the media reports on the Pakistan betting scandal put off you or your friends from watching cricket on TV or going to see games live?



Yes

No

Yes

Don't know

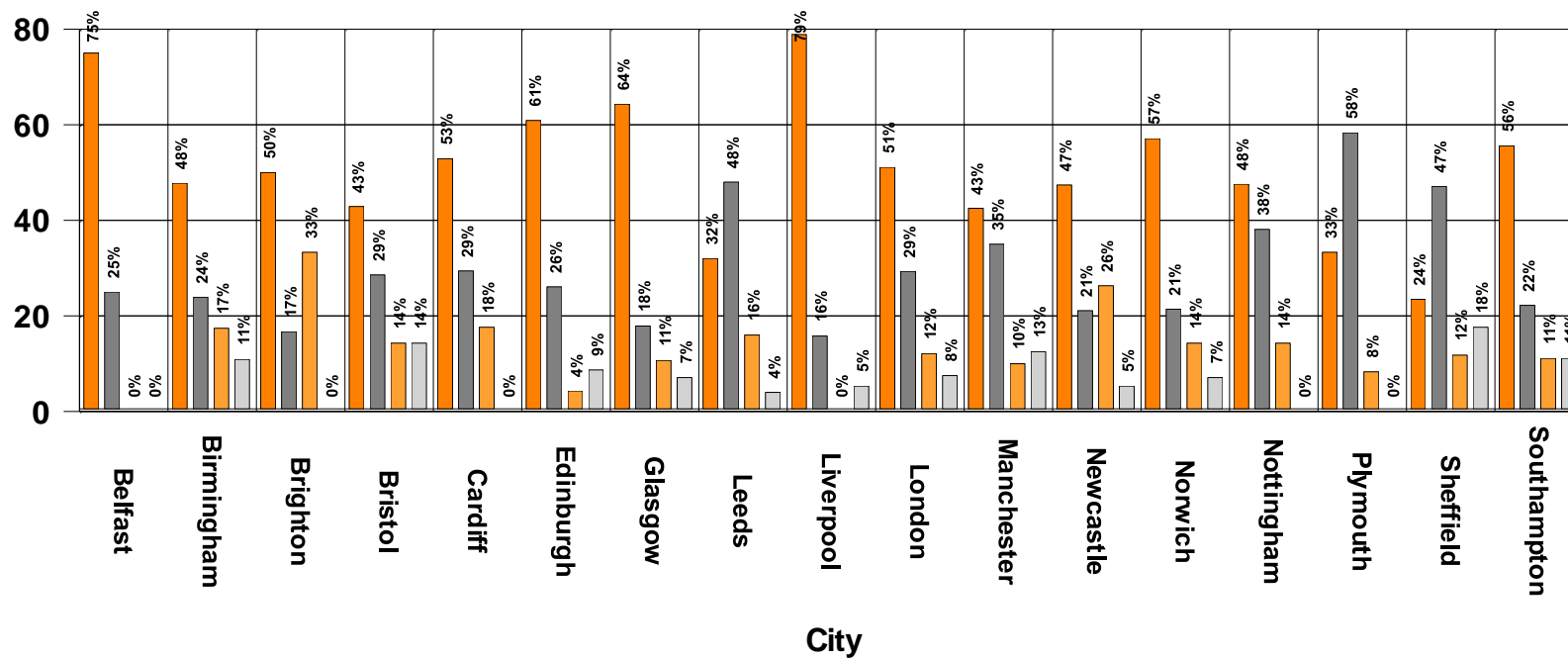
Question Two Cross Tabulation With City

Have the media reports on the Pakistan betting scandal put off you or your friends from watching cricket on TV or going to see games live?

Break % Respondents	Base	City																	
		Belfast	Birm...	Brig...	Bristol	Cardiff	Edin...	Glas...	Leeds	Liver...	Lond...	Man...	New...	Nor...	Notti...	Plym...	Shef...	Sout...	
Base	510	12	46	6	28	17	23	28	25	19	174	40	19	14	21	12	17	9	
Q3																			
I/we don't watch cricket on TV or see games live	50.2%	75.0%	47.8%	50.0%	42.9%	52.9%	60.9%	64.3%	32.0%	78.9%	51.1%	42.5%	47.4%	57.1%	47.6%	33.3%	23.5%	55.6%	
No	29.6%	25.0%	23.9%	16.7%	28.6%	29.4%	26.1%	17.9%	48.0%	15.8%	29.3%	35.0%	21.1%	21.4%	38.1%	58.3%	47.1%	22.2%	
Yes	12.5%	-	17.4%	33.3%	14.3%	17.6%	4.3%	10.7%	16.0%	-	12.1%	10.0%	26.3%	14.3%	14.3%	8.3%	11.8%	11.1%	
Don't know	7.6%	-	10.9%	-	14.3%	-	8.7%	7.1%	4.0%	5.3%	7.5%	12.5%	5.3%	7.1%	-	-	17.6%	11.1%	

Question Two Cross Tabulation With City

Have the media reports on the Pakistan betting scandal put off you or your friends from watching cricket on TV or going to see games live?



■ I/we don't watch cricket on TV or see games live

■ No

■ Yes

■ Don't know

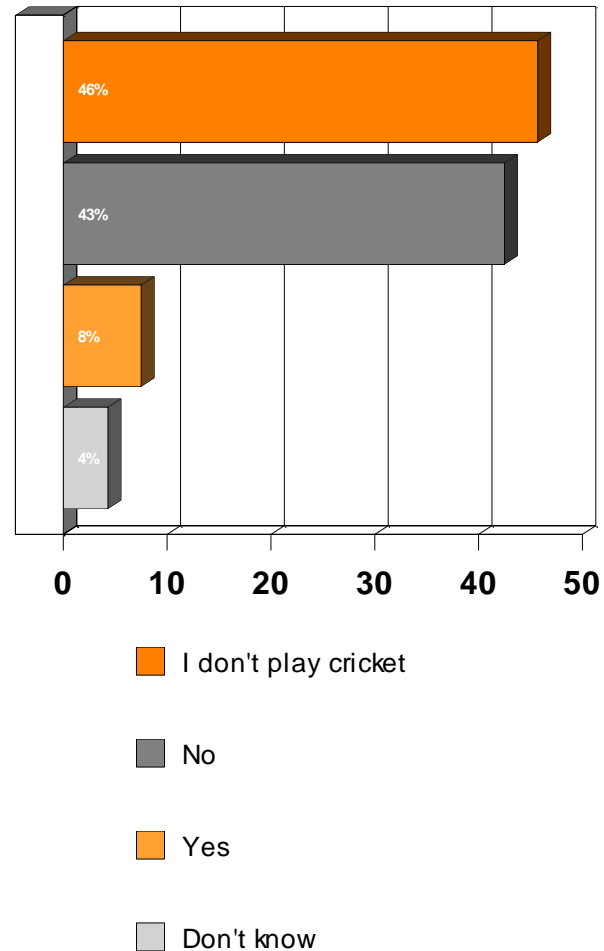
Question Three

Have the media reports on the Pakistan betting scandal put off you or your friends from playing cricket?

Base % Respondents	
Base	100.0%
Q4	
I don't play cricket	45.7%
No	42.5%
Yes	7.5%
Don't know	4.3%

Question Three

Have the media reports on the Pakistan betting scandal put off you or your friends from playing cricket?



Question Three Cross Tabulation With Gender

Have the media reports on the Pakistan betting scandal put off you or your friends from playing cricket?

Break % Respondents	Base	Gender	
		Male	Female
Base	510	257	253
Q4			
I don't play cricket	45.7%	35.8%	55.7%
No	42.5%	50.2%	34.8%
Yes	7.5%	10.9%	4.0%
Don't know	4.3%	3.1%	5.5%

Question Three Cross Tabulation With Gender

Have the media reports on the Pakistan betting scandal put off you or your friends from playing cricket?



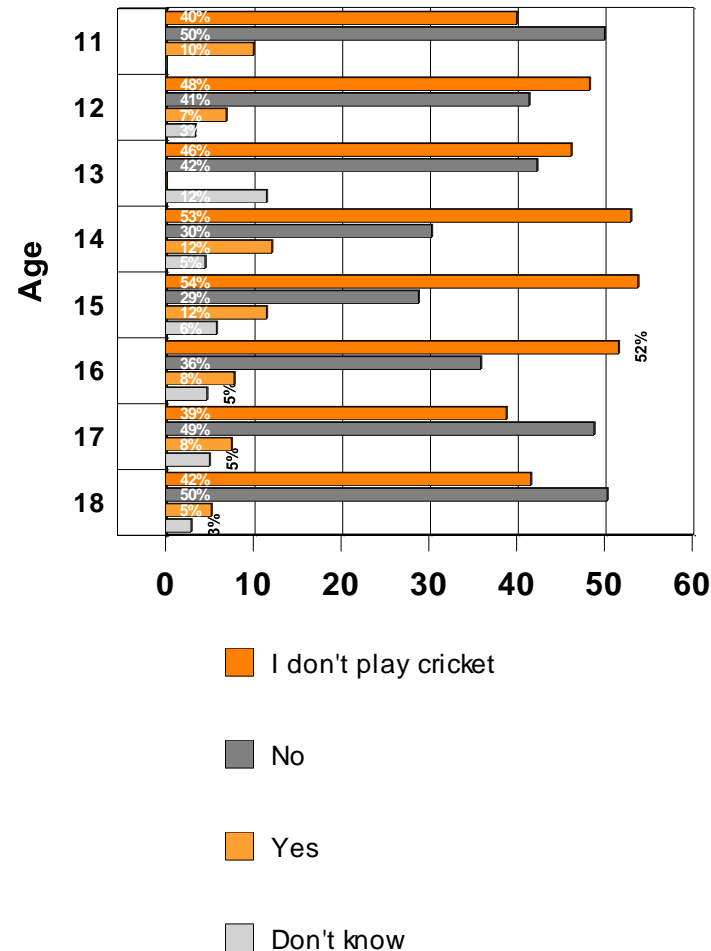
Question Three Cross Tabulation With Age

Have the media reports on the Pakistan betting scandal put off you or your friends from playing cricket?

Break % Respondents	Base	Age							
		11	12	13	14	15	16	17	18
Base	510	20	29	26	66	52	64	80	173
Q4									
I don't play cricket	45.7%	40.0%	48.3%	46.2%	53.0%	53.8%	51.6%	38.8%	41.6%
No	42.5%	50.0%	41.4%	42.3%	30.3%	28.8%	35.9%	48.8%	50.3%
Yes	7.5%	10.0%	6.9%	-	12.1%	11.5%	7.8%	7.5%	5.2%
Don't know	4.3%	-	3.4%	11.5%	4.5%	5.8%	4.7%	5.0%	2.9%

Question Three Cross Tabulation With Age

Have the media reports on the Pakistan betting scandal put off you or your friends from playing cricket?



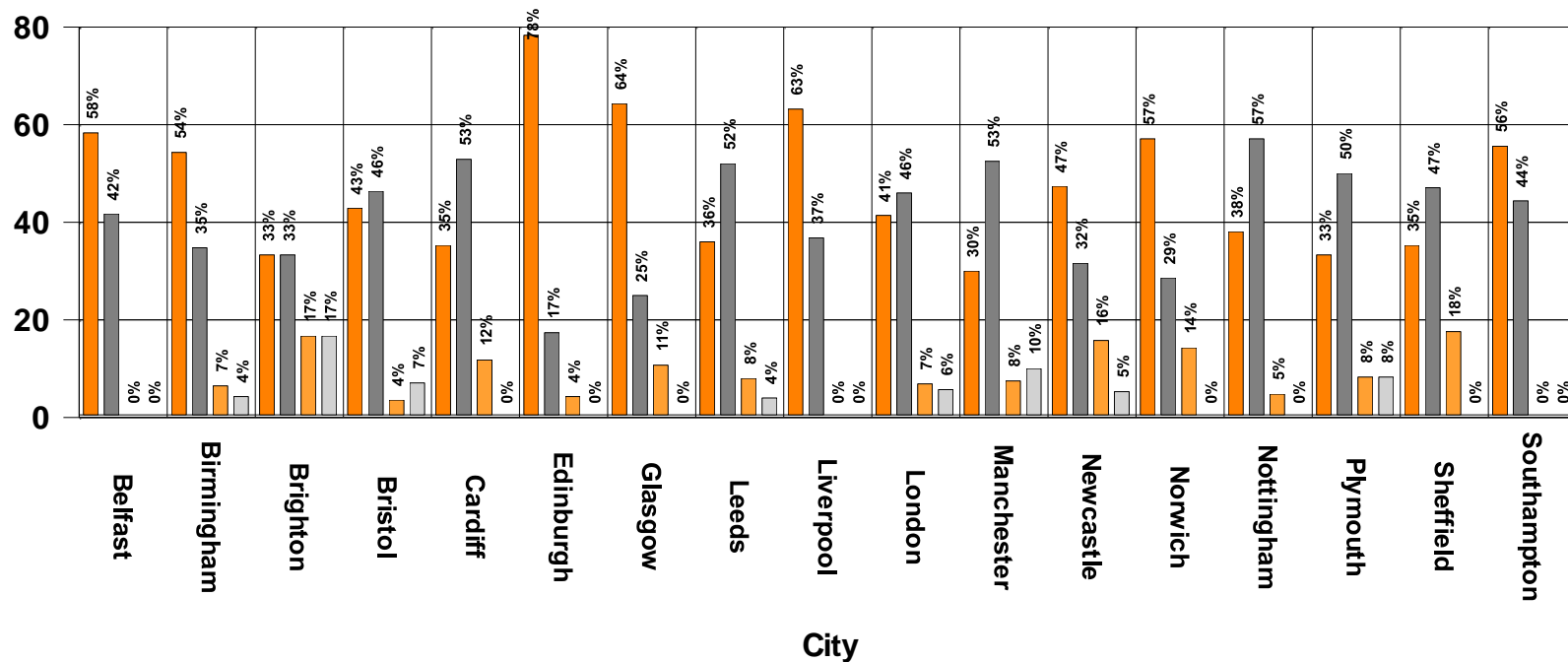
Question Three Cross Tabulation With City

Have the media reports on the Pakistan betting scandal put off you or your friends from playing cricket?

Break % Respond...	Base	City																
		Belfast	Birmin...	Brighton	Bristol	Cardiff	Edinbu...	Glasg...	Leeds	Liverp...	London	Manch...	New ca...	Norwich	Nottin...	Plymo...	Sheffi...	South...
Base	510	12	46	6	28	17	23	28	25	19	174	40	19	14	21	12	17	9
Q4																		
I don't pla...	45.7%	58.3%	54.3%	33.3%	42.9%	35.3%	78.3%	64.3%	36.0%	63.2%	41.4%	30.0%	47.4%	57.1%	38.1%	33.3%	35.3%	55.6%
No	42.5%	41.7%	34.8%	33.3%	46.4%	52.9%	17.4%	25.0%	52.0%	36.8%	46.0%	52.5%	31.6%	28.6%	57.1%	50.0%	47.1%	44.4%
Yes	7.5%	-	6.5%	16.7%	3.6%	11.8%	4.3%	10.7%	8.0%	-	6.9%	7.5%	15.8%	14.3%	4.8%	8.3%	17.6%	-
Don't know	4.3%	-	4.3%	16.7%	7.1%	-	-	-	4.0%	-	5.7%	10.0%	5.3%	-	-	8.3%	-	-

Question Three Cross Tabulation With City

Have the media reports on the Pakistan betting scandal put off you or your friends from playing cricket?



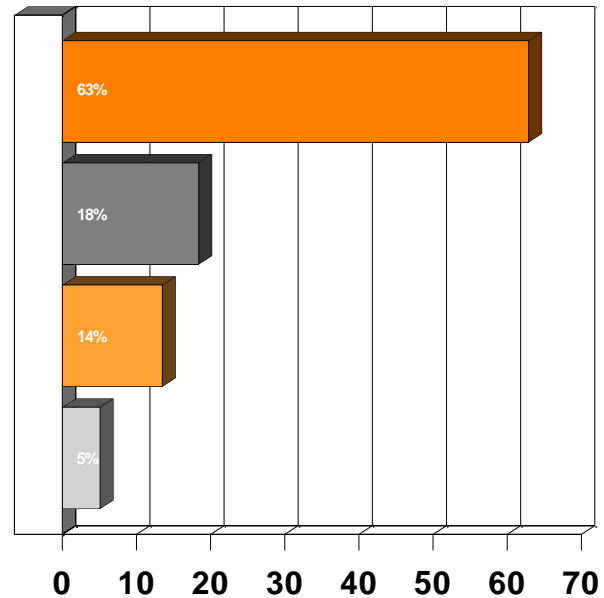
Question Four

Do you think the recent negative media reports will make cricket at school:

Base % Respondents	
Base	100.0%
Q5	
Make no difference	62.9%
Cricket isn't played as a sport at our school	18.4%
Less popular	13.5%
More popular	5.1%

Question Four

Do you think the recent negative media reports will make cricket at school:



- Make no difference
- Cricket isn't played as a sport at our school
- Less popular
- More popular

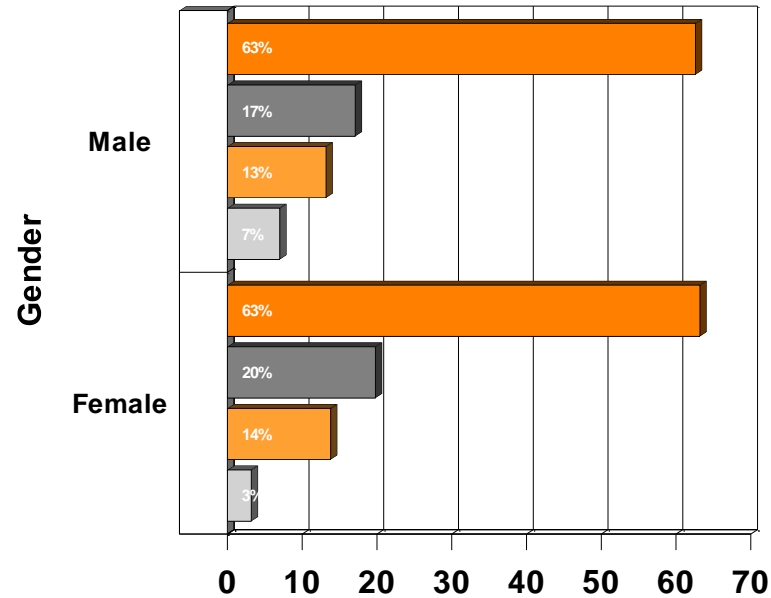
Question Four Cross Tabulation With Gender

Do you think the recent negative media reports will make cricket at school:

Break % Respondents	Base	Gender	
		Male	Female
Base	510	257	253
Q5			
Make no difference	62.9%	62.6%	63.2%
Cricket isn't played as a sport at our school	18.4%	17.1%	19.8%
Less popular	13.5%	13.2%	13.8%
More popular	5.1%	7.0%	3.2%

Question Four Cross Tabulation With Gender

Do you think the recent negative media reports will make cricket at school:



- Make no difference
- Cricket isn't played as a sport at our school
- Less popular
- More popular

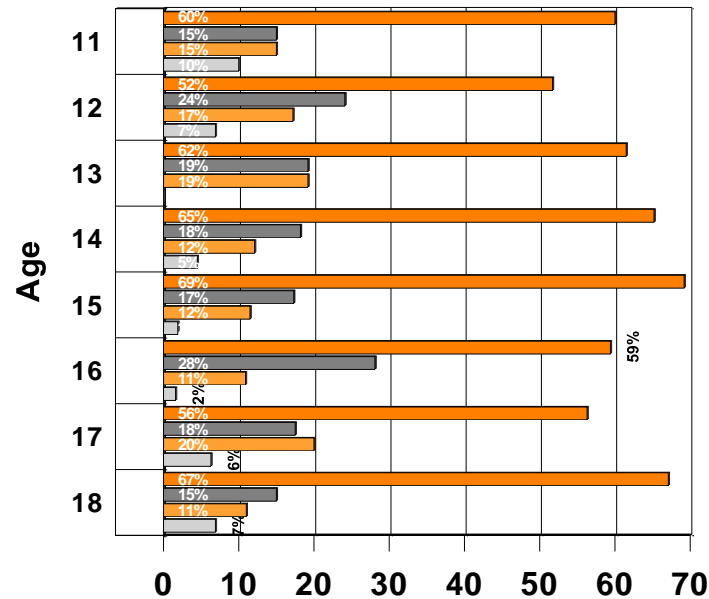
Question Four Cross Tabulation With Age

Do you think the recent negative media reports will make cricket at school:

Break % Respondents	Base	Age							
		11	12	13	14	15	16	17	18
Base	510	20	29	26	66	52	64	80	173
Q5									
Make no difference	62.9%	60.0%	51.7%	61.5%	65.2%	69.2%	59.4%	56.3%	67.1%
Cricket isn't played as a sport at our school	18.4%	15.0%	24.1%	19.2%	18.2%	17.3%	28.1%	17.5%	15.0%
Less popular	13.5%	15.0%	17.2%	19.2%	12.1%	11.5%	10.9%	20.0%	11.0%
More popular	5.1%	10.0%	6.9%	-	4.5%	1.9%	1.6%	6.3%	6.9%

Question Four Cross Tabulation With Age

Do you think the recent negative media reports will make cricket at school:



- Make no difference
- Cricket isn't played as a sport at our school
- Less popular
- More popular

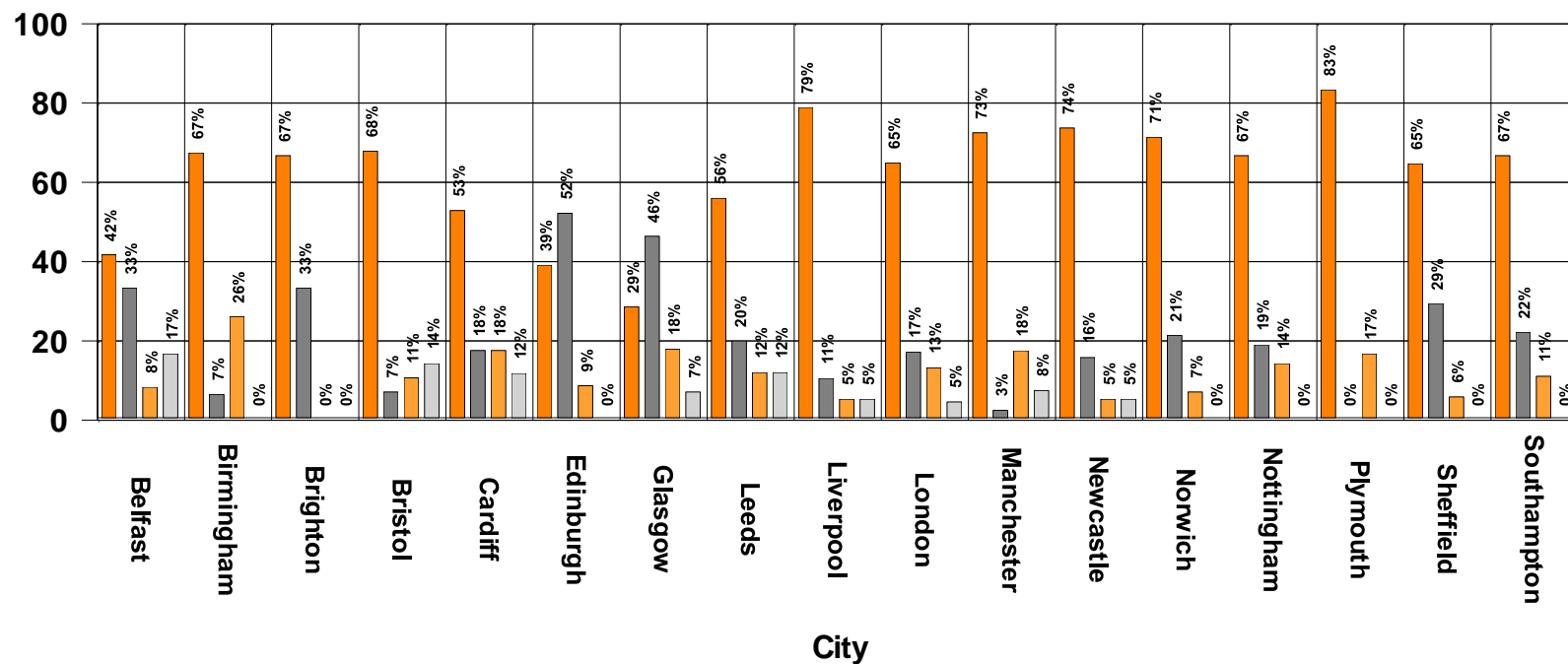
Question Four Cross Tabulation With City

Do you think the recent negative media reports will make cricket at school:

Break % Respondents	Base	City																
		Belfast	Birmi...	Bright...	Bristol	Cardiff	Edinb...	Glasg...	Leeds	Liver...	London	Manc...	Newc...	Norwi...	Nottin...	Plym...	Sheffi...	South...
Base	510	12	46	6	28	17	23	28	25	19	174	40	19	14	21	12	17	9
Q5																		
Make no dif...	62.9%	41.7%	67.4%	66.7%	67.9%	52.9%	39.1%	28.6%	56.0%	78.9%	64.9%	72.5%	73.7%	71.4%	66.7%	83.3%	64.7%	66.7%
Cricket isn't played as a sport at our ...	18.4%	33.3%	6.5%	33.3%	7.1%	17.6%	52.2%	46.4%	20.0%	10.5%	17.2%	2.5%	15.8%	21.4%	19.0%	-	29.4%	22.2%
Less popular	13.5%	8.3%	26.1%	-	10.7%	17.6%	8.7%	17.9%	12.0%	5.3%	13.2%	17.5%	5.3%	7.1%	14.3%	16.7%	5.9%	11.1%
More popular	5.1%	16.7%	-	-	14.3%	11.8%	-	7.1%	12.0%	5.3%	4.6%	7.5%	5.3%	-	-	-	-	-

Question Four Cross Tabulation With City

Do you think the recent negative media reports will make cricket at school:



- Make no difference
- Cricket isn't played as a sport at our school
- Less popular
- More popular

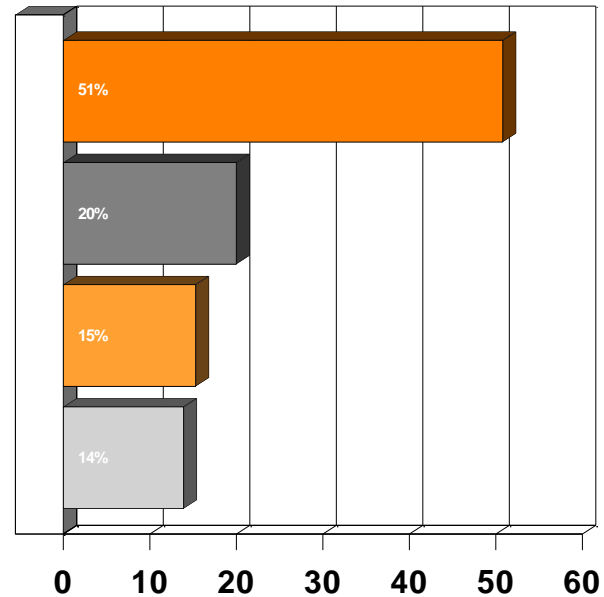
Question Five


How bad/damaging do you think the negative media reports have been for cricket as a sport?


Base % Respondents	
Base	100.0%
Q6	
Quite bad/quite damaging	50.8%
Don't know	20.0%
Not bad/not damaging at all	15.3%
Very bad/very damaging	13.9%


Question Five

How bad/damaging do you think the negative media reports have been for cricket as a sport?



 Quite bad/quite damaging

 Don't know

 Not bad/not damaging at all

 Very bad/very damaging

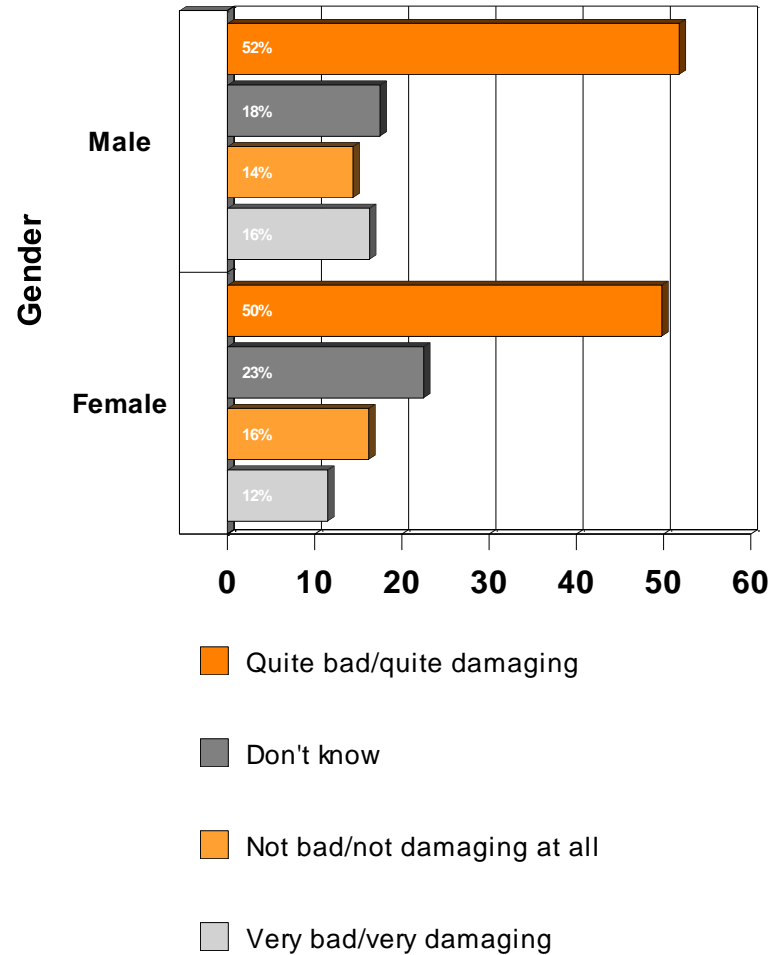
Question Five Cross Tabulation With Gender

How bad/damaging do you think the negative media reports have been for cricket as a sport?

Break % Respondents	Base	Gender	
		Male	Female
Base	510	257	253
Q6			
Quite bad/quite damaging	50.8%	51.8%	49.8%
Don't know	20.0%	17.5%	22.5%
Not bad/not damaging at all	15.3%	14.4%	16.2%
Very bad/very damaging	13.9%	16.3%	11.5%

Question Five Cross Tabulation With Gender

How bad/damaging do you think the negative media reports have been for cricket as a sport?



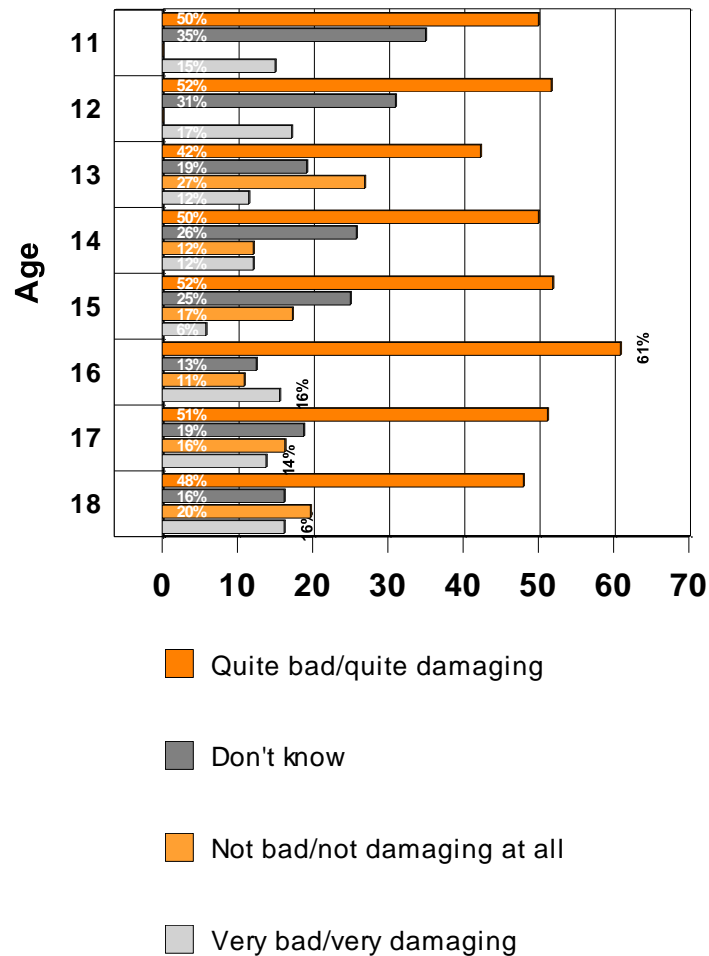
Question Five Cross Tabulation With Age

How bad/damaging do you think the negative media reports have been for cricket as a sport?

Break % Respondents	Base	Age							
		11	12	13	14	15	16	17	18
Base	510	20	29	26	66	52	64	80	173
Q6									
Quite bad/quite damaging	50.8%	50.0%	51.7%	42.3%	50.0%	51.9%	60.9%	51.2%	48.0%
Don't know	20.0%	35.0%	31.0%	19.2%	25.8%	25.0%	12.5%	18.8%	16.2%
Not bad/not damaging at all	15.3%	-	-	26.9%	12.1%	17.3%	10.9%	16.3%	19.7%
Very bad/very damaging	13.9%	15.0%	17.2%	11.5%	12.1%	5.8%	15.6%	13.8%	16.2%

Question Five Cross Tabulation With Age

How bad/damaging do you think the negative media reports have been for cricket as a sport?



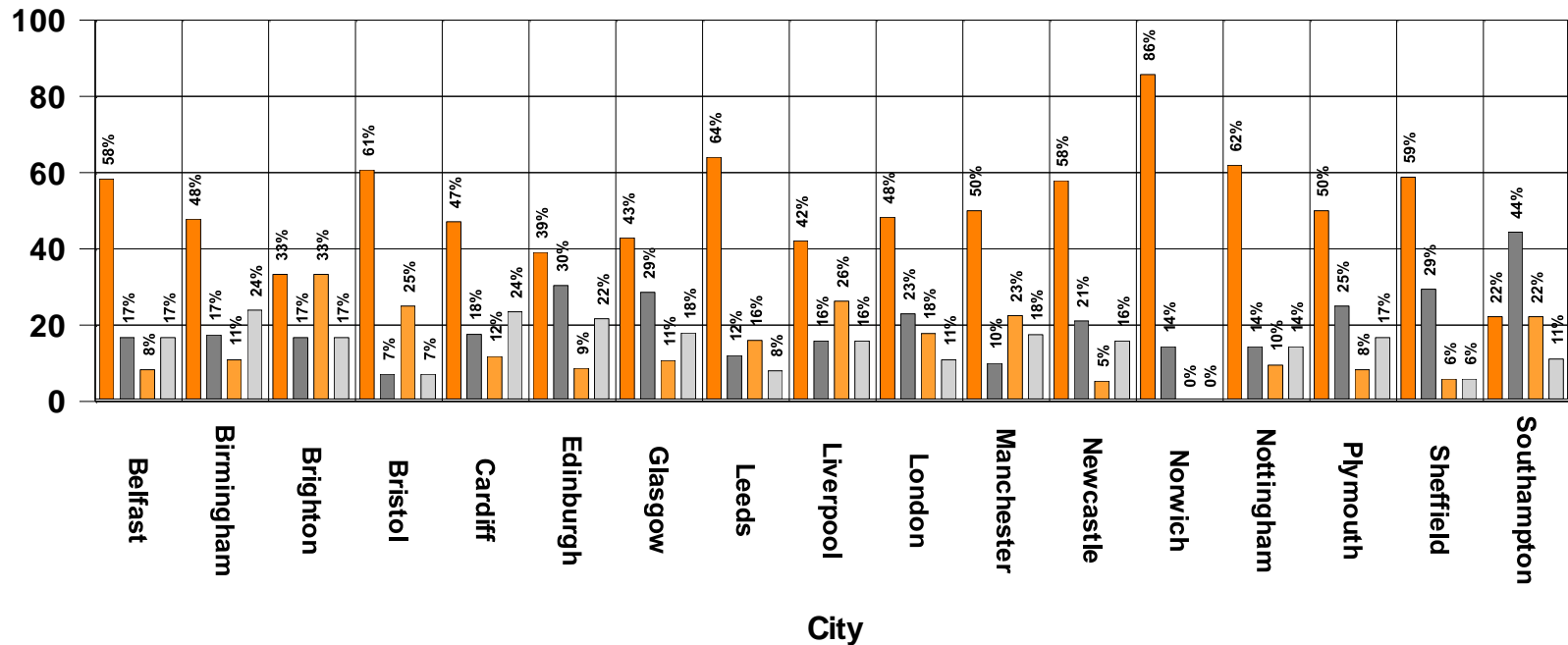
Question Five Cross Tabulation With City

How bad/damaging do you think the negative media reports have been for cricket as a sport?

Break % Respo...	Base	City																	
		Belfast	Birmin...	Brighton	Bristol	Cardiff	Edinbu...	Glasgow	Leeds	Liverp...	London	Manch...	Newca...	Norwich	Notting...	Plymo...	Sheffield	Southa...	
Base	510	12	46	6	28	17	23	28	25	19	174	40	19	14	21	12	17	9	
Q6																			
Quite b- ad/quit...	50.8%	58.3%	47.8%	33.3%	60.7%	47.1%	39.1%	42.9%	64.0%	42.1%	48.3%	50.0%	57.9%	85.7%	61.9%	50.0%	58.8%	22.2%	
Don't ...	20.0%	16.7%	17.4%	16.7%	7.1%	17.6%	30.4%	28.6%	12.0%	15.8%	23.0%	10.0%	21.1%	14.3%	14.3%	25.0%	29.4%	44.4%	
Not bad- /not da...	15.3%	8.3%	10.9%	33.3%	25.0%	11.8%	8.7%	10.7%	16.0%	26.3%	17.8%	22.5%	5.3%	-	9.5%	8.3%	5.9%	22.2%	
Very ba- d/very...	13.9%	16.7%	23.9%	16.7%	7.1%	23.5%	21.7%	17.9%	8.0%	15.8%	10.9%	17.5%	15.8%	-	14.3%	16.7%	5.9%	11.1%	

Question Five Cross Tabulation With City

How bad/damaging do you think the negative media reports have been for cricket as a sport?



- Quite bad/quite damaging
- Don't know
- Not bad/not damaging at all
- Very bad/very damaging

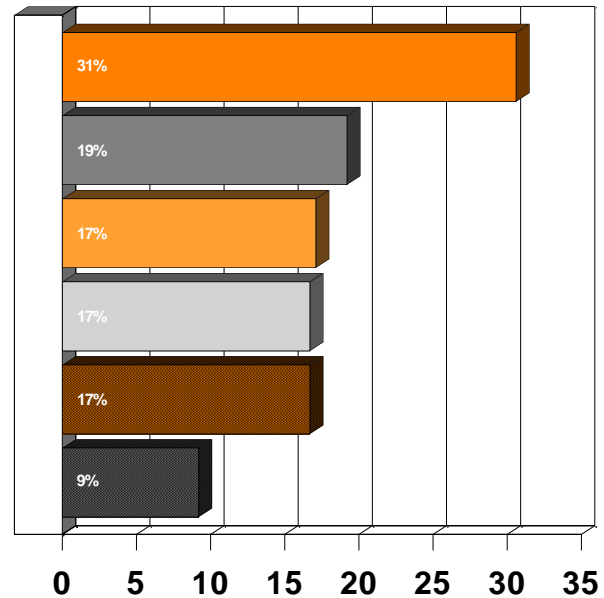
Question Six

What do you think of cricket now?

Base % Respondents	
Base	100.0%
Q7	
None of the above	30.6%
It's a corrupt game	19.2%
Other please specify	17.1%
It's an honest game	16.7%
It's a game you can trust	16.7%
It's full of cheats	9.2%

Question Six

What do you think of cricket now?



- None of the above
- It's a corrupt game
- Other please specify
- It's an honest game
- It's a game you can trust
- It's full of cheats

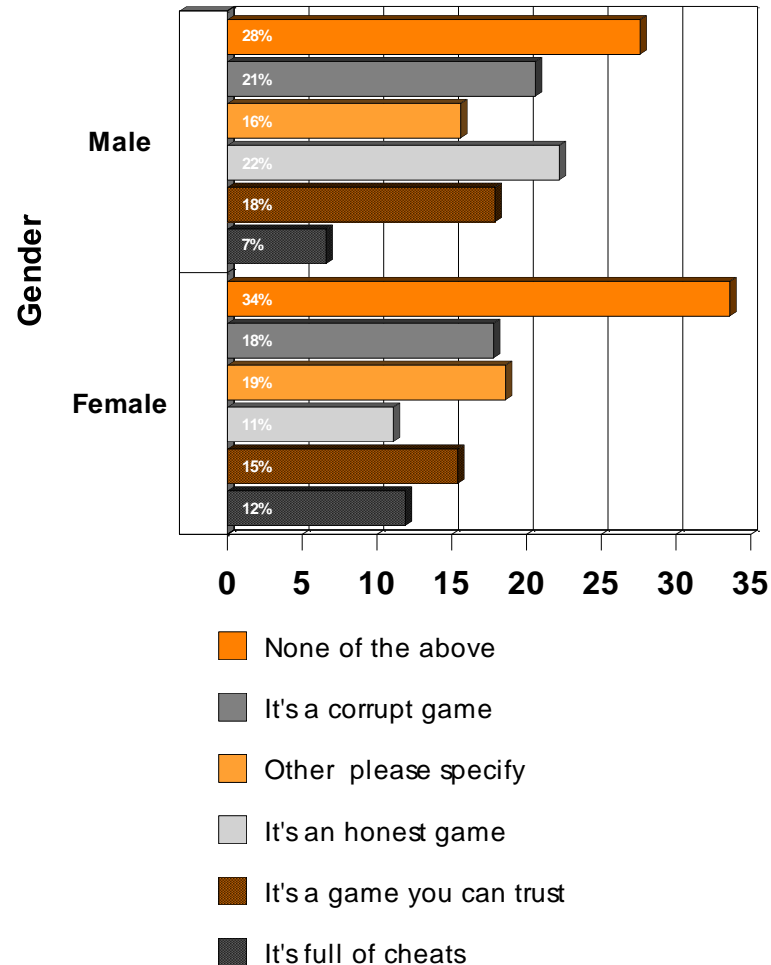
Question Six Cross Tabulation With Gender

What do you think of cricket now?

Break % Respondents	Base	Gender	
		Male	Female
Base	510	257	253
Q7			
None of the above	30.6%	27.6%	33.6%
It's a corrupt game	19.2%	20.6%	17.8%
Other please specify	17.1%	15.6%	18.6%
It's an honest game	16.7%	22.2%	11.1%
It's a game you can trust	16.7%	17.9%	15.4%
It's full of cheats	9.2%	6.6%	11.9%

Question Six Cross Tabulation With Gender

What do you think of cricket now?



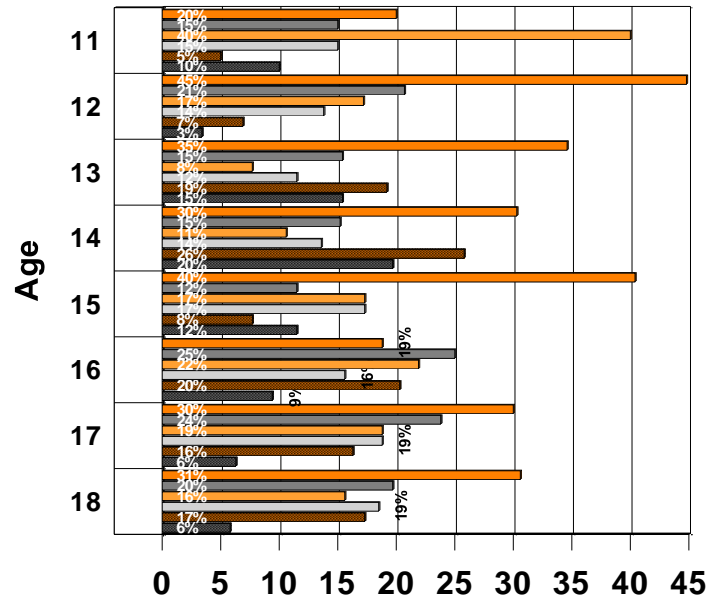
Question Six Cross Tabulation With Age

What do you think of cricket now?

Break % Respondents	Base	Age							
		11	12	13	14	15	16	17	18
Base	510	20	29	26	66	52	64	80	173
Q7									
None of the above	30.6%	20.0%	44.8%	34.6%	30.3%	40.4%	18.8%	30.0%	30.6%
It's a corrupt game	19.2%	15.0%	20.7%	15.4%	15.2%	11.5%	25.0%	23.8%	19.7%
Other please specify	17.1%	40.0%	17.2%	7.7%	10.6%	17.3%	21.9%	18.8%	15.6%
It's an honest game	16.7%	15.0%	13.8%	11.5%	13.6%	17.3%	15.6%	18.8%	18.5%
It's a game you can trust	16.7%	5.0%	6.9%	19.2%	25.8%	7.7%	20.3%	16.3%	17.3%
It's full of cheats	9.2%	10.0%	3.4%	15.4%	19.7%	11.5%	9.4%	6.3%	5.8%

Question Six Cross Tabulation With Age

What do you think of cricket now?



- None of the above
- It's a corrupt game
- Other please specify
- It's an honest game
- It's a game you can trust
- It's full of cheats

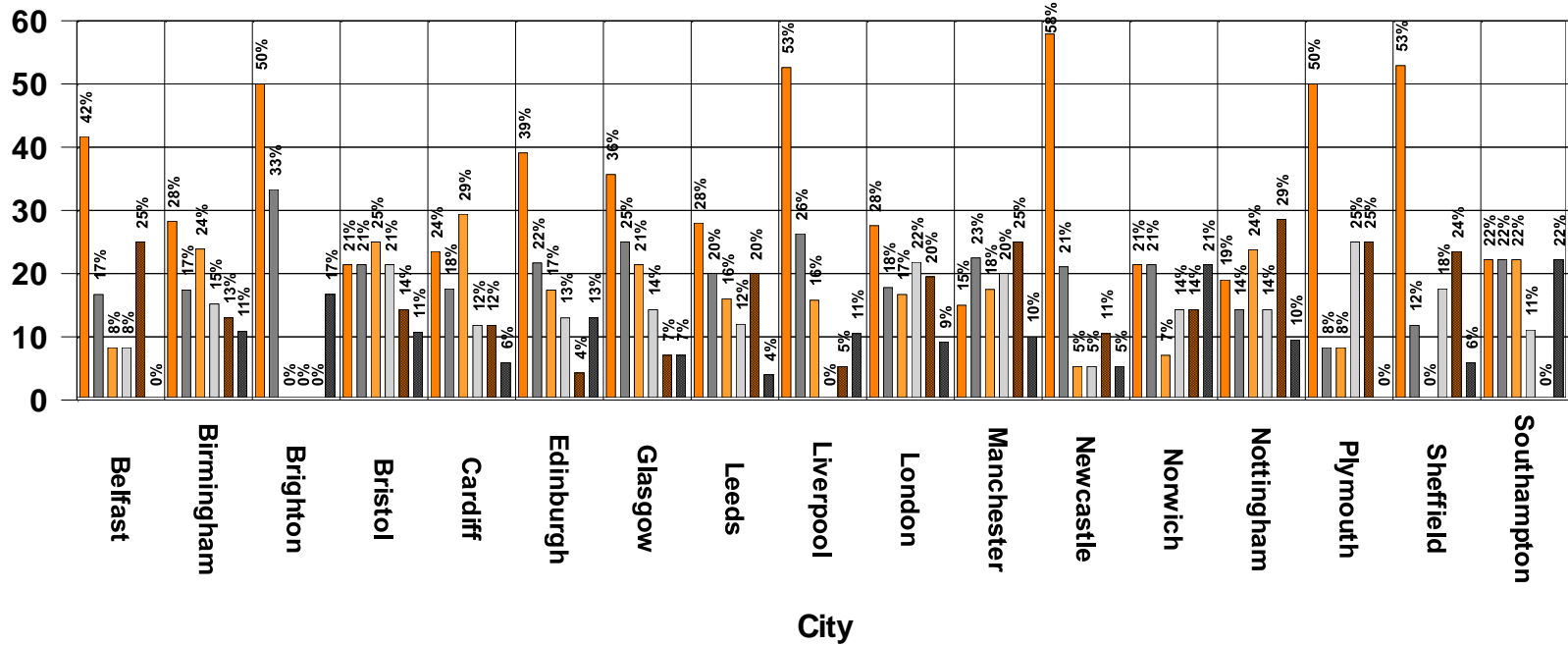
Question Six Cross Tabulation With City

What do you think of cricket now?

Break % Respondents	Base	City																
		Belfast	Birmi...	Brigh...	Bristol	Cardiff	Edin...	Glas...	Leeds	Liver...	Lond...	Manc...	New...	Norw...	Notti...	Plym...	Sheff...	Sout...
Base	510	12	46	6	28	17	23	28	25	19	174	40	19	14	21	12	17	9
Q7																		
None of the ...	30.6%	41.7%	28.3%	50.0%	21.4%	23.5%	39.1%	35.7%	28.0%	52.6%	27.6%	15.0%	57.9%	21.4%	19.0%	50.0%	52.9%	22.2%
It's a corrupt...	19.2%	16.7%	17.4%	33.3%	21.4%	17.6%	21.7%	25.0%	20.0%	26.3%	17.8%	22.5%	21.1%	21.4%	14.3%	8.3%	11.8%	22.2%
Other please specify	17.1%	8.3%	23.9%	-	25.0%	29.4%	17.4%	21.4%	16.0%	15.8%	16.7%	17.5%	5.3%	7.1%	23.8%	8.3%	-	22.2%
It's an hone...	16.7%	8.3%	15.2%	-	21.4%	11.8%	13.0%	14.3%	12.0%	-	21.8%	20.0%	5.3%	14.3%	14.3%	25.0%	17.6%	11.1%
It's a game you can trust	16.7%	25.0%	13.0%	-	14.3%	11.8%	4.3%	7.1%	20.0%	5.3%	19.5%	25.0%	10.5%	14.3%	28.6%	25.0%	23.5%	-
It's full of ch...	9.2%	-	10.9%	16.7%	10.7%	5.9%	13.0%	7.1%	4.0%	10.5%	9.2%	10.0%	5.3%	21.4%	9.5%	-	5.9%	22.2%

Question Six Cross Tabulation With City

What do you think of cricket now?



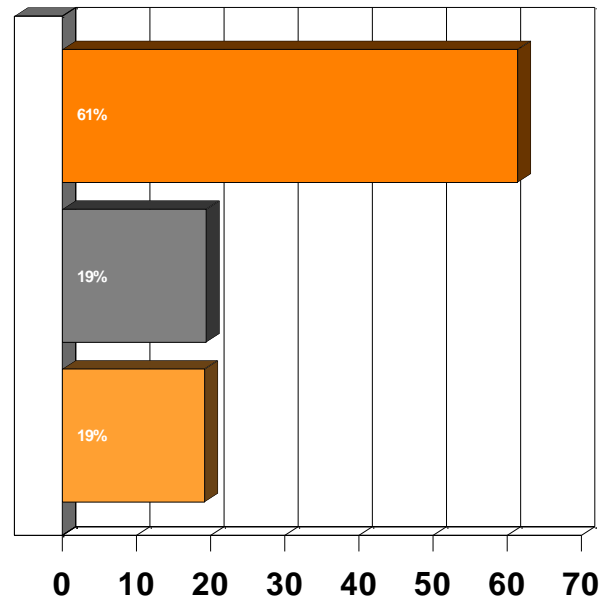
Question Seven

Do you think it would help to educate school children on the values of the Spirit of Cricket (playing hard, playing fair, and not cheating)?

Base % Respondents	
Base	100.0%
Q8	
Yes	61.4%
No	19.4%
Don't know	19.2%

Question Seven

Do you think it would help to educate school children on the values of the Spirit of Cricket (playing hard, playing fair, and not cheating)?



Yes

No

Don't know

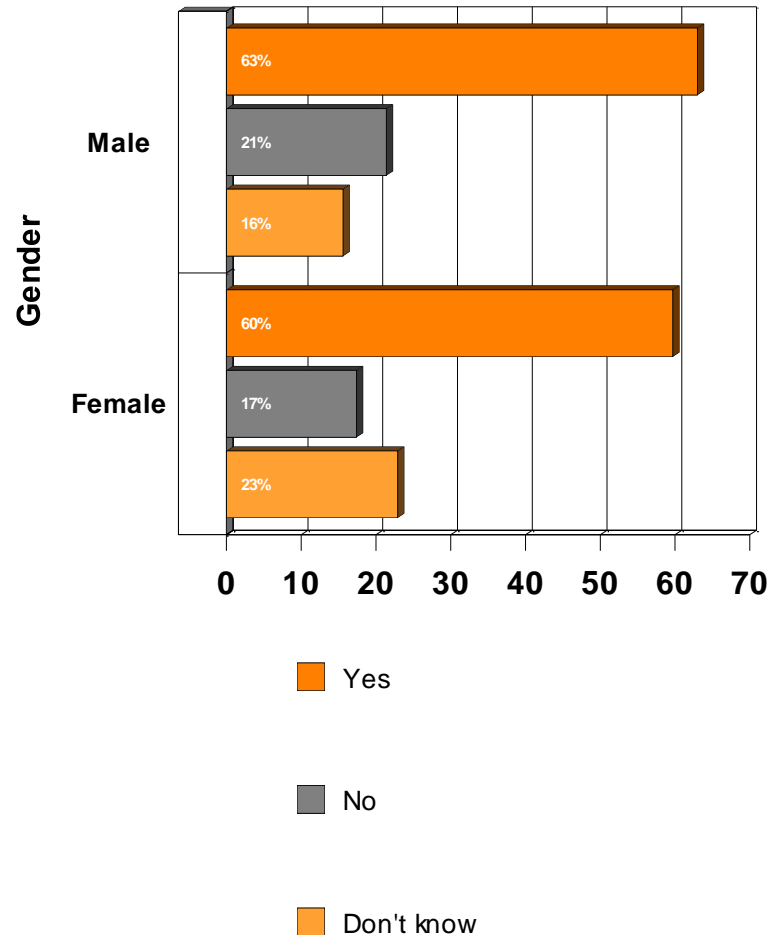
Question Seven Cross Tabulation With Gender

Do you think it would help to educate school children on the values of the Spirit of Cricket (playing hard, playing fair, and not cheating)?

Break % Respondents	Base	Gender	
		Male	Female
Base	510	257	253
Q8			
Yes	61.4%	63.0%	59.7%
No	19.4%	21.4%	17.4%
Don't know	19.2%	15.6%	22.9%

Question Seven Cross Tabulation With Gender

Do you think it would help to educate school children on the values of the Spirit of Cricket (playing hard, playing fair, and not cheating)?



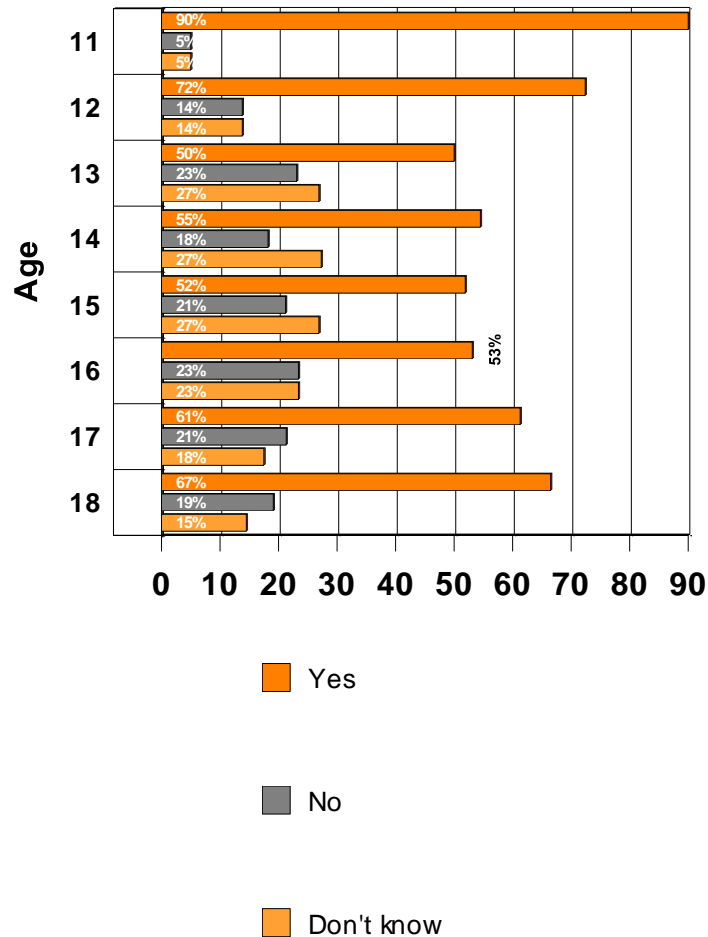
Question Seven Cross Tabulation With Age

Do you think it would help to educate school children on the values of the Spirit of Cricket (playing hard, playing fair, and not cheating)?

Break % Respondents	Base	Age							
		11	12	13	14	15	16	17	18
Base	510	20	29	26	66	52	64	80	173
Q8									
Yes	61.4%	90.0%	72.4%	50.0%	54.5%	51.9%	53.1%	61.3%	66.5%
No	19.4%	5.0%	13.8%	23.1%	18.2%	21.2%	23.4%	21.3%	19.1%
Don't know	19.2%	5.0%	13.8%	26.9%	27.3%	26.9%	23.4%	17.5%	14.5%

Question Seven Cross Tabulation With Age

Do you think it would help to educate school children on the values of the Spirit of Cricket (playing hard, playing fair, and not cheating)?



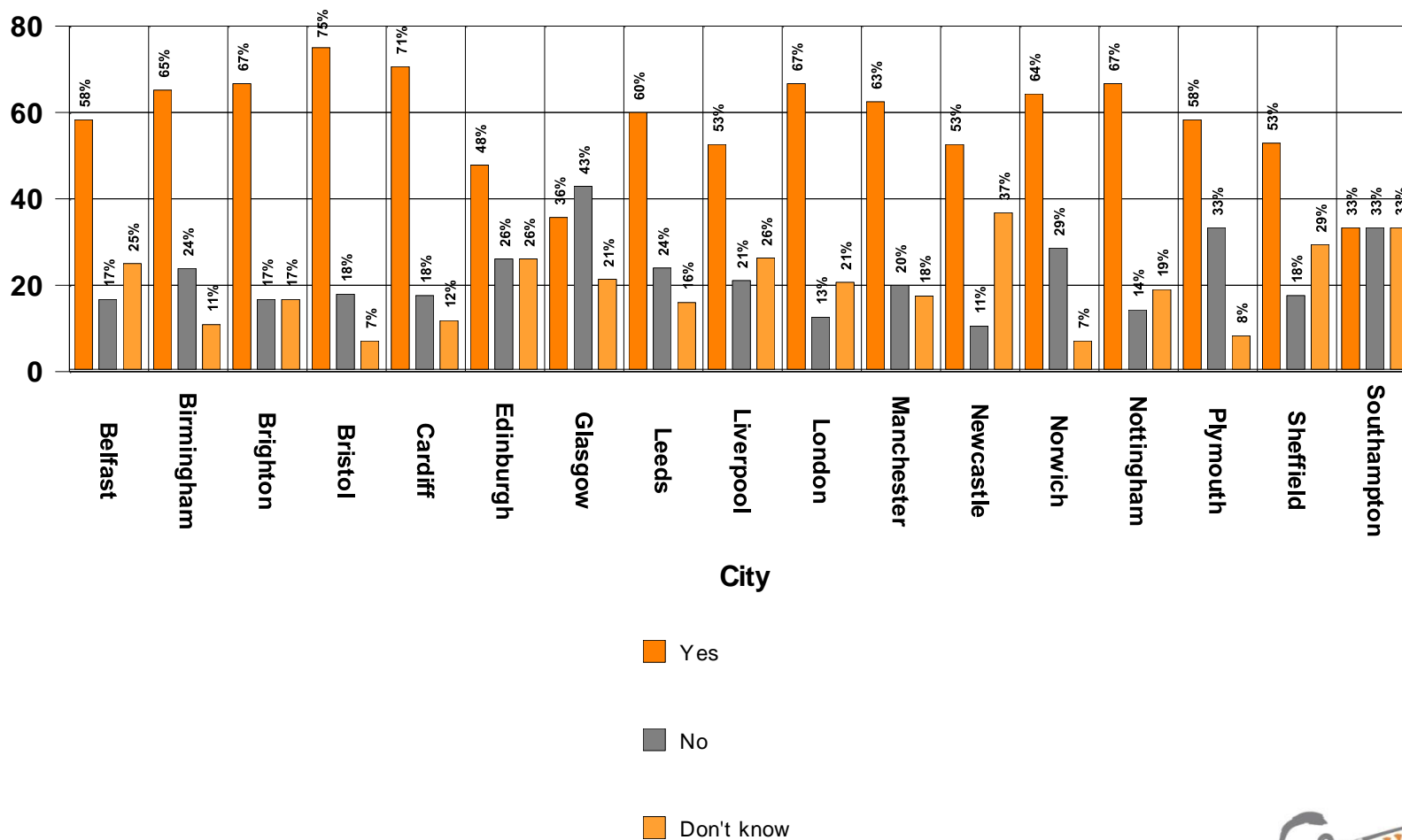
Question Seven Cross Tabulation With City

Do you think it would help to educate school children on the values of the Spirit of Cricket (playing hard, playing fair, and not cheating)?

Break % Respond...	Base	City																
		Belfast	Birmi...	Bright...	Bristol	Cardiff	Edinb...	Glasg...	Leeds	Liverp...	London	Manc...	Newc...	Norwich	Nottin...	Plymo...	Sheffi...	South...
Base	510	12	46	6	28	17	23	28	25	19	174	40	19	14	21	12	17	9
Q8																		
Yes	61.4%	58.3%	65.2%	66.7%	75.0%	70.6%	47.8%	35.7%	60.0%	52.6%	66.7%	62.5%	52.6%	64.3%	66.7%	58.3%	52.9%	33.3%
No	19.4%	16.7%	23.9%	16.7%	17.9%	17.6%	26.1%	42.9%	24.0%	21.1%	12.6%	20.0%	10.5%	28.6%	14.3%	33.3%	17.6%	33.3%
Don't kn...	19.2%	25.0%	10.9%	16.7%	7.1%	11.8%	26.1%	21.4%	16.0%	26.3%	20.7%	17.5%	36.8%	7.1%	19.0%	8.3%	29.4%	33.3%

Question Seven Cross Tabulation With City

Do you think it would help to educate school children on the values of the Spirit of Cricket (playing hard, playing fair, and not cheating)?



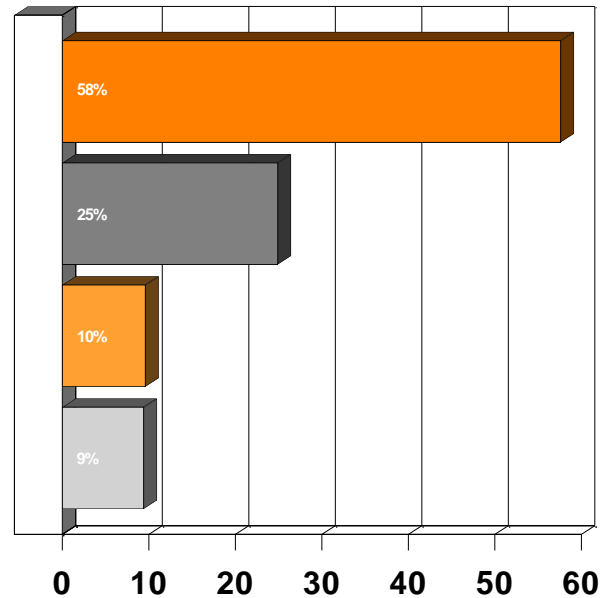
Question Eight

Do you think this kind of alleged betting in matches:

Base % Respondents	
Base	100.0%
Q9	
Happens all over the world?	57.6%
Don't know	24.9%
Happens in Pakistani cricket only?	9.6%
Happens also in English cricket?	9.4%

Question Eight

Do you think this kind of alleged betting in matches:



- Happens all over the world?
- Don't know
- Happens in Pakistani cricket only?
- Happens also in English cricket?

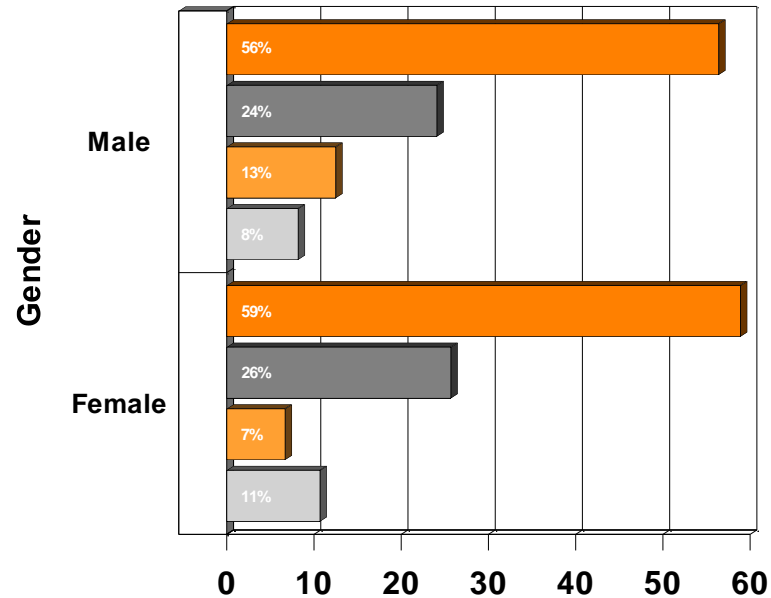
Question Eight Cross Tabulation With Gender

Do you think this kind of alleged betting in matches:

Break % Respondents	Base	Gender	
		Male	Female
Base	510	257	253
Q9			
Happens all over the world?	57.6%	56.4%	58.9%
Don't know	24.9%	24.1%	25.7%
Happens in Pakistani cricket only?	9.6%	12.5%	6.7%
Happens also in English cricket?	9.4%	8.2%	10.7%

Question Eight Cross Tabulation With Gender

Do you think this kind of alleged betting in matches:



- Happens all over the world?
- Don't know
- Happens in Pakistani cricket only?
- Happens also in English cricket?

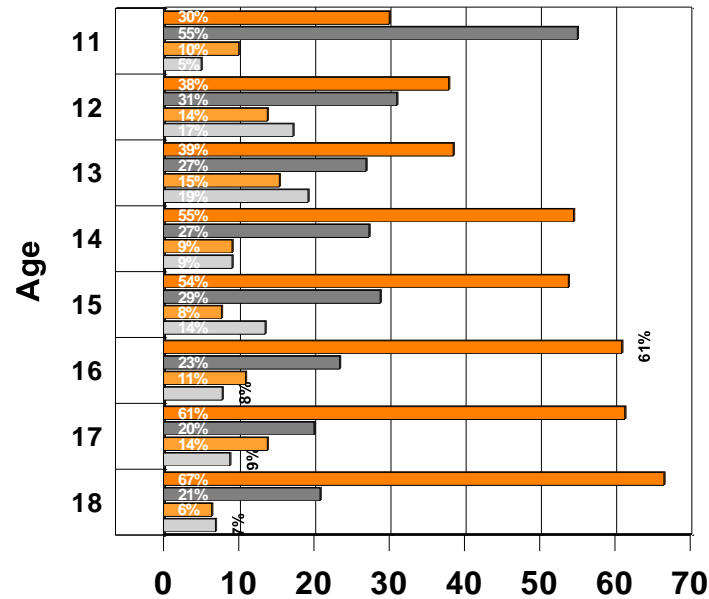
Question Eight Cross Tabulation With Age

Do you think this kind of alleged betting in matches:

Break % Respondents	Base	Age							
		11	12	13	14	15	16	17	18
Base	510	20	29	26	66	52	64	80	173
Q9									
Happens all over the world?	57.6%	30.0%	37.9%	38.5%	54.5%	53.8%	60.9%	61.3%	66.5%
Don't know	24.9%	55.0%	31.0%	26.9%	27.3%	28.8%	23.4%	20.0%	20.8%
Happens in Pakistani cricket only?	9.6%	10.0%	13.8%	15.4%	9.1%	7.7%	10.9%	13.8%	6.4%
Happens also in English cricket?	9.4%	5.0%	17.2%	19.2%	9.1%	13.5%	7.8%	8.8%	6.9%

Question Eight Cross Tabulation With Age

Do you think this kind of alleged betting in matches:



- Happens all over the world?
- Don't know
- Happens in Pakistani cricket only?
- Happens also in English cricket?

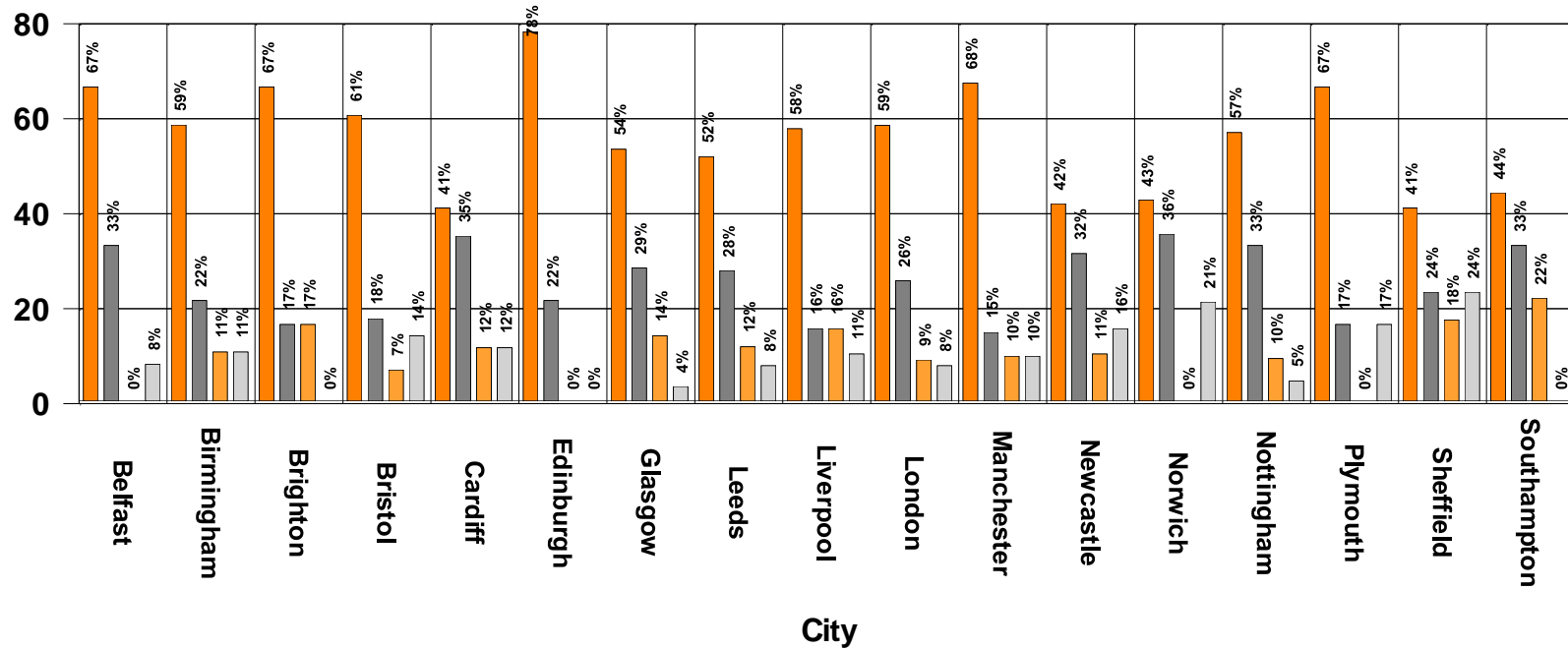
Question Eight Cross Tabulation With City

Do you think this kind of alleged betting in matches:

Break % Responde...	Base	City																
		Belfast	Birmin...	Brighton	Bristol	Cardiff	Edinbu...	Glasgow	Leeds	Liverp...	London	Manch...	Newca...	Norwich	Notting...	Plymo...	Sheffield	Southa...
Base	510	12	46	6	28	17	23	28	25	19	174	40	19	14	21	12	17	9
Q9																		
Happens all over the w...	57.6%	66.7%	58.7%	66.7%	60.7%	41.2%	78.3%	53.6%	52.0%	57.9%	58.6%	67.5%	42.1%	42.9%	57.1%	66.7%	41.2%	44.4%
Don't know	24.9%	33.3%	21.7%	16.7%	17.9%	35.3%	21.7%	28.6%	28.0%	15.8%	25.9%	15.0%	31.6%	35.7%	33.3%	16.7%	23.5%	33.3%
Happens in Pakistani c...	9.6%	-	10.9%	16.7%	7.1%	11.8%	-	14.3%	12.0%	15.8%	9.2%	10.0%	10.5%	-	9.5%	-	17.6%	22.2%
Happens als- o in Englis...	9.4%	8.3%	10.9%	-	14.3%	11.8%	-	3.6%	8.0%	10.5%	8.0%	10.0%	15.8%	21.4%	4.8%	16.7%	23.5%	-

Question Eight Cross Tabulation With City

Do you think this kind of alleged betting in matches:



- Happens all over the world?
- Don't know
- Happens in Pakistani cricket only?
- Happens also in English cricket?

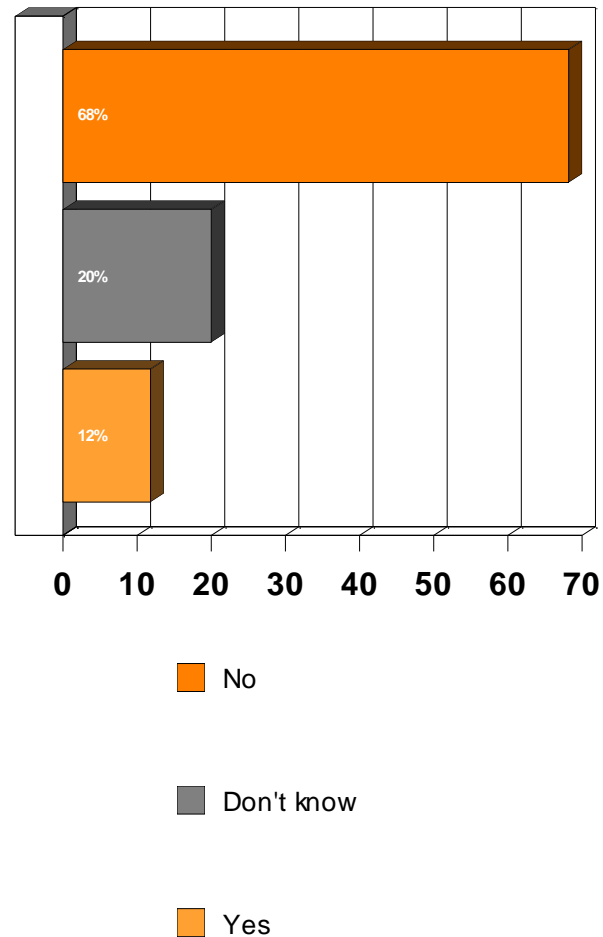
Question Nine

If you were an international cricketer, would you agree to fix a match, or an element of a match, in return for money?

Base % Respondents	
Base	100.0%
Q10	
No	68.2%
Don't know	20.0%
Yes	11.8%

Question Nine

If you were an international cricketer, would you agree to fix a match, or an element of a match, in return for money?



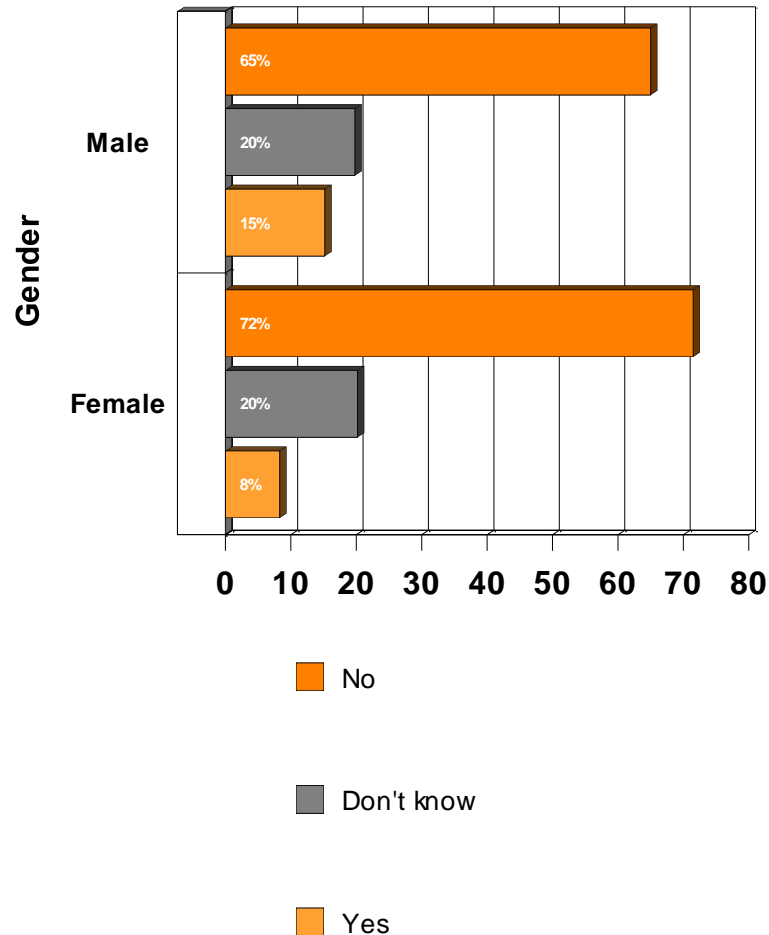
Question Nine Cross Tabulation With Gender

If you were an international cricketer, would you agree to fix a match, or an element of a match, in return for money?

Break % Respondents	Base	Gender	
		Male	Female
Base	510	257	253
Q10			
No	68.2%	65.0%	71.5%
Don't know	20.0%	19.8%	20.2%
Yes	11.8%	15.2%	8.3%

Question Nine Cross Tabulation With Gender

If you were an international cricketer, would you agree to fix a match, or an element of a match, in return for money?



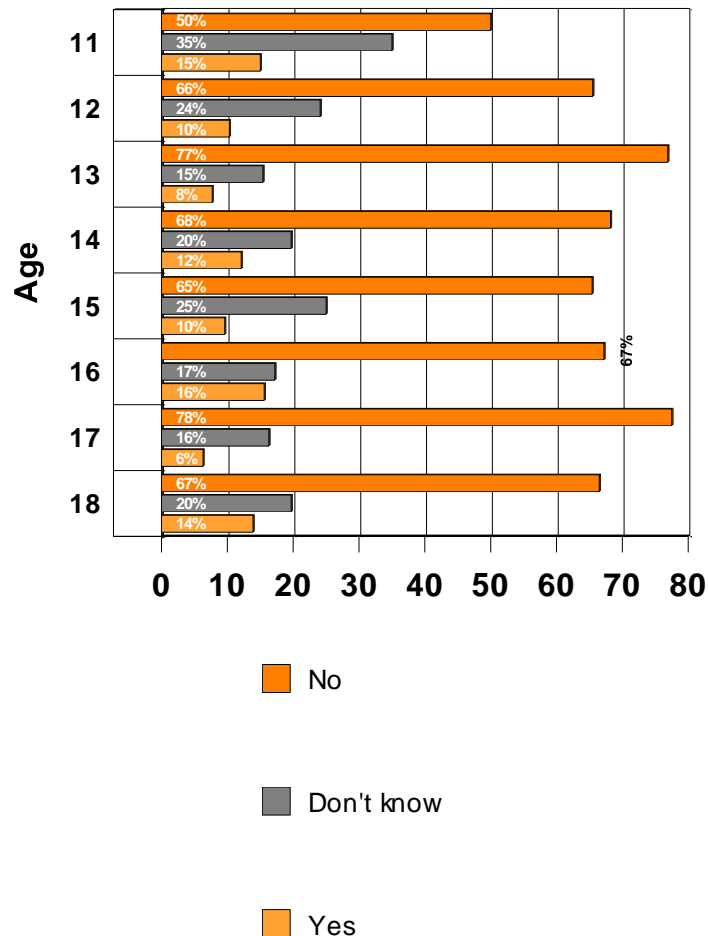
Question Nine Cross Tabulation With Age

If you were an international cricketer, would you agree to fix a match, or an element of a match, in return for money?

Break % Respondents	Base	Age							
		11	12	13	14	15	16	17	18
Base	510	20	29	26	66	52	64	80	173
Q10									
No	68.2%	50.0%	65.5%	76.9%	68.2%	65.4%	67.2%	77.5%	66.5%
Don't know	20.0%	35.0%	24.1%	15.4%	19.7%	25.0%	17.2%	16.3%	19.7%
Yes	11.8%	15.0%	10.3%	7.7%	12.1%	9.6%	15.6%	6.3%	13.9%

Question Nine Cross Tabulation With Age

If you were an international cricketer, would you agree to fix a match, or an element of a match, in return for money?



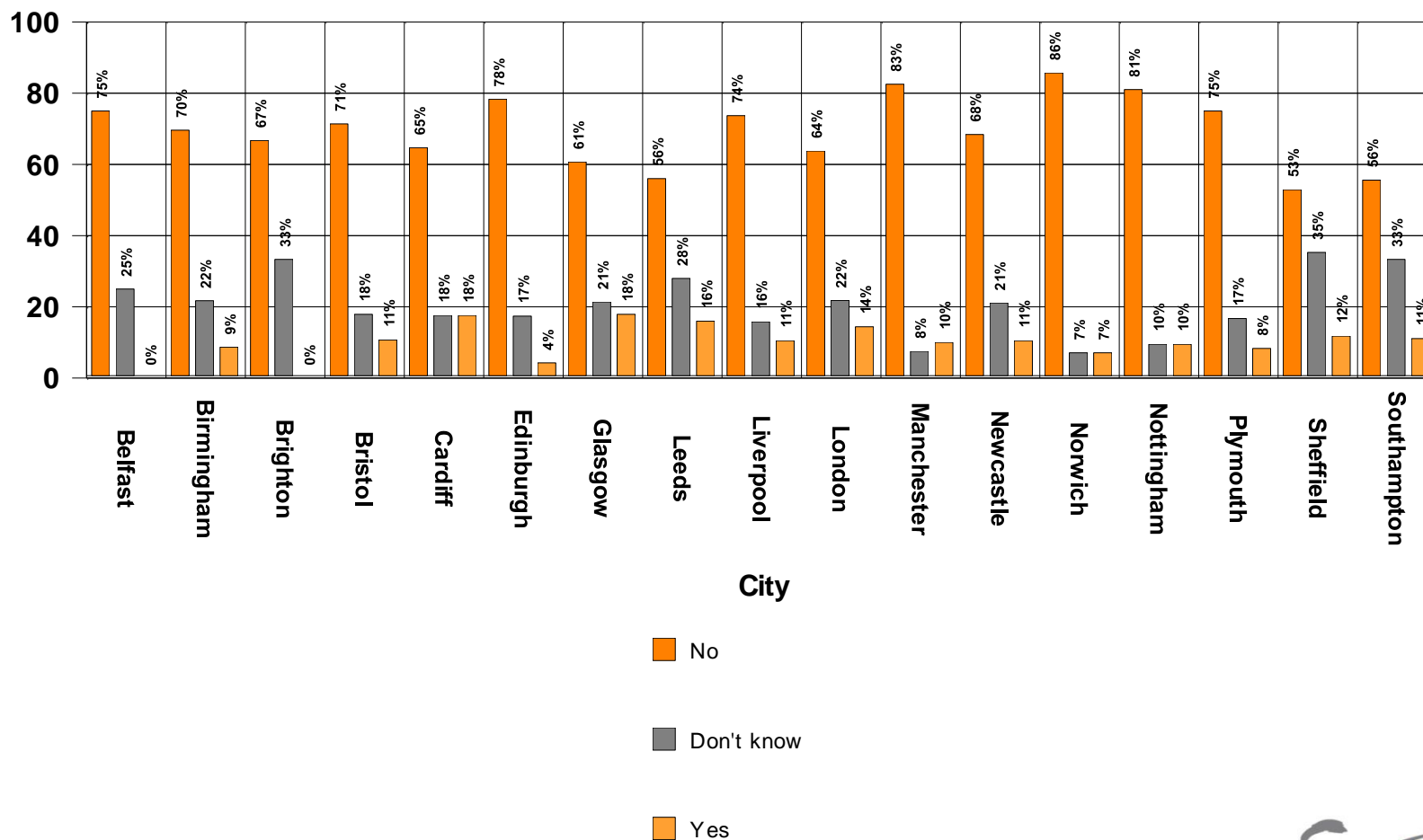
Question Nine Cross Tabulation With City

If you were an international cricketer, would you agree to fix a match, or an element of a match, in return for money?

Break % Respo...	Base	City																
		Belfast	Birmin...	Brighton	Bristol	Cardiff	Edinbu...	Glasgow	Leeds	Liverp...	London	Manch...	Newca...	Norwich	Nottin...	Plymo...	Sheffi...	Southa...
Base	510	12	46	6	28	17	23	28	25	19	174	40	19	14	21	12	17	9
Q10																		
No	68.2%	75.0%	69.6%	66.7%	71.4%	64.7%	78.3%	60.7%	56.0%	73.7%	63.8%	82.5%	68.4%	85.7%	81.0%	75.0%	52.9%	55.6%
Don't k...	20.0%	25.0%	21.7%	33.3%	17.9%	17.6%	17.4%	21.4%	28.0%	15.8%	21.8%	7.5%	21.1%	7.1%	9.5%	16.7%	35.3%	33.3%
Yes	11.8%	-	8.7%	-	10.7%	17.6%	4.3%	17.9%	16.0%	10.5%	14.4%	10.0%	10.5%	7.1%	9.5%	8.3%	11.8%	11.1%

Question Nine Cross Tabulation With City

If you were an international cricketer, would you agree to fix a match, or an element of a match, in return for money?



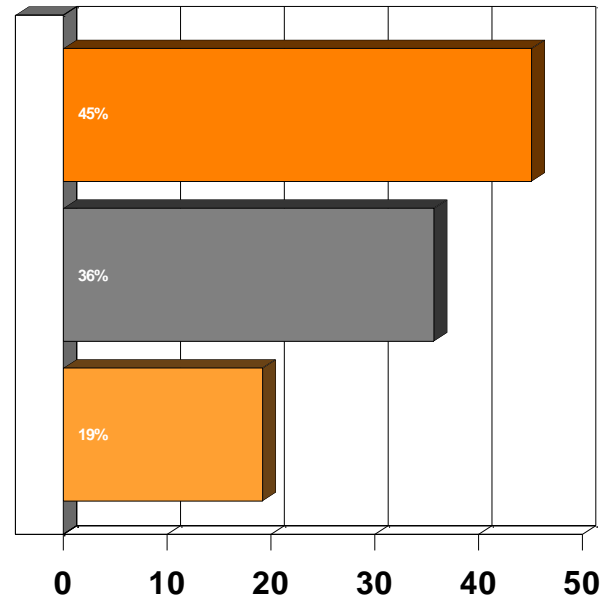
Question Ten

Do you still think cricket is a fair game and do you trust the people who play it?

Base % Respondents	
Base	100.0%
Q11	
Yes	45.1%
Don't know	35.7%
No	19.2%

Question Ten

Do you still think cricket is a fair game and do you trust the people who play it?



Yes

Don't know

No

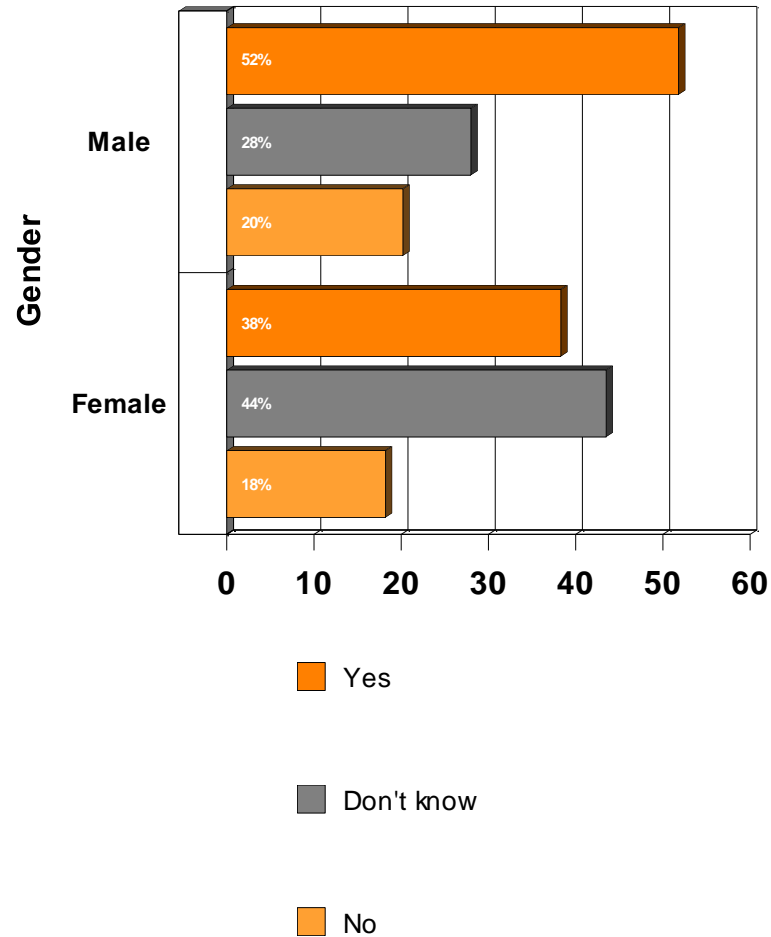
Question Ten Cross Tabulation With Gender

Do you still think cricket is a fair game and do you trust the people who play it?

Break % Respondents	Base	Gender	
		Male	Female
Base	510	257	253
Q11			
Yes	45.1%	51.8%	38.3%
Don't know	35.7%	28.0%	43.5%
No	19.2%	20.2%	18.2%

Question Ten Cross Tabulation With Gender

Do you still think cricket is a fair game and do you trust the people who play it?



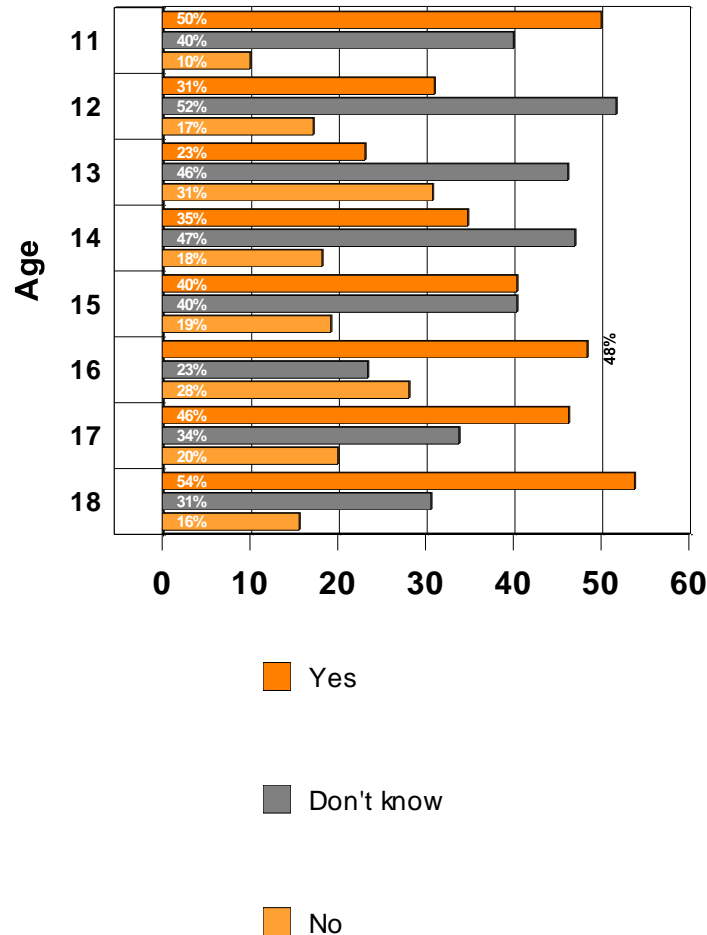
Question Ten Cross Tabulation With Age

Do you still think cricket is a fair game and do you trust the people who play it?

Break % Respondents	Base	Age							
		11	12	13	14	15	16	17	18
Base	510	20	29	26	66	52	64	80	173
Q11									
Yes	45.1%	50.0%	31.0%	23.1%	34.8%	40.4%	48.4%	46.3%	53.8%
Don't know	35.7%	40.0%	51.7%	46.2%	47.0%	40.4%	23.4%	33.8%	30.6%
No	19.2%	10.0%	17.2%	30.8%	18.2%	19.2%	28.1%	20.0%	15.6%

Question Ten Cross Tabulation With Age

Do you still think cricket is a fair game and do you trust the people who play it?



Question Ten Cross Tabulation With City

Do you still think cricket is a fair game and do you trust the people who play it?

Break %...	Base	City																
		Belfast	Birming...	Brighton	Bristol	Cardiff	Edinbur...	Glasgow	Leeds	Liverpool	London	Manche...	Newcas...	Norwich	Notting...	Plymouth	Sheffield	Southa...
Base	510	12	46	6	28	17	23	28	25	19	174	40	19	14	21	12	17	9
Q11																		
Yes	45.1%	25.0%	47.8%	33.3%	46.4%	47.1%	34.8%	35.7%	44.0%	57.9%	48.3%	55.0%	26.3%	28.6%	52.4%	50.0%	35.3%	44.4%
Don't...	35.7%	58.3%	37.0%	33.3%	46.4%	47.1%	43.5%	32.1%	40.0%	21.1%	35.6%	15.0%	42.1%	28.6%	28.6%	25.0%	52.9%	44.4%
No	19.2%	16.7%	15.2%	33.3%	7.1%	5.9%	21.7%	32.1%	16.0%	21.1%	16.1%	30.0%	31.6%	42.9%	19.0%	25.0%	11.8%	11.1%

Question Ten Cross Tabulation With City

Do you still think cricket is a fair game and do you trust the people who play it?

